



AEVA DAY

# AEVA DAY AGENDA

Aeva Company & Technology Overview

Automotive Market Overview

*Panel with Daimler Truck, Torc and Bendix*

*Panel with Mercedes-Benz and Wideye by AGC*

Manufacturing Automation Market Overview

*Fireside chat with Nikon*

Smart Infrastructure & Transport Market Overview

Break

# AEVA DAY AGENDA

Keynote and Fireside with Strategic Partner LG Innotek

Scaling Manufacturing Overview

*Panel with Jabil and Tower Semiconductor*

Q2 Financial Results and Update

Q&A

# LEGAL DISCLAIMER

This presentation has been prepared by Aeva Technologies, Inc. ("we," "us," "our," "Aeva," or the "Company"). This presentation includes forward-looking statements within the meaning of Section 27A of the Securities Act of 1933, as amended and Section 21E of the Securities Exchange Act of 1934, as amended. Forward-looking statements are predictions, projections and other statements about future events that are based on current expectations and assumptions and, as a result, are subject to risks and uncertainties. Forward-looking statements in this presentation include our beliefs regarding our expectations with respect to our market opportunity, profitability, timing of product shipments, customer agreements, and ability to enter new markets and investments. Many factors could cause actual future events to differ materially from the forward-looking statements in this presentation, including, but not limited to: (i) the fact that Aeva is an early stage company with a history of operating losses and may never achieve profitability, (ii) Aeva's limited operating history and limited history of shipping significant product volumes, (iii) the ability to implement business plans, forecasts, and other expectations and to identify and realize additional opportunities, (iv) the ability for Aeva to have its products selected for inclusion in OEM products, (v) the ability to manufacture at volumes and costs needed for commercial programs, (vi) no assurance that any of our customers will ever complete testing and validation with us or that we will receive any revenue in connection with such programs or that such customers will continue such programs, (vii) the need to conclude definitive deployment or production agreements with potential customers, (viii) that any validation orders will result in larger orders, (ix) that any programs into which our products may be designed will result in significant end customer sales, (x) that any of the opportunities referenced in this presentation will result in significant deployments of our products, (xi) unforeseen project delays or product issues, such as difficulties or delays in shipping, manufacturing or installation, (xii) end customer acceptance of the platform, (xiii) our ability to reduce costs and unforeseen expenses, and (xiv) other material risks and other important factors that could affect our financial results that are further described in our filings with the SEC.

# LEGAL DISCLAIMER

Please refer to our filings with the SEC, including our most recent Form 10-K and Form 10-Q. These filings identify and address other important risks and uncertainties that could cause actual events and results to differ materially from those contained in the forward-looking statements. Forward-looking statements speak only as of the date they are made. Readers are cautioned not to put undue reliance on forward-looking statements, and Aeva assumes no obligation and does not intend to update or revise these forward-looking statements, whether as a result of new information, future events, or otherwise.

We include statements and information in this presentation concerning our industry and the markets in which we operate, including our market opportunity, which are based on information from independent industry organizations and other third-party sources (including industry publications, surveys and forecasts). While we believe these third-party sources to be reliable as of the date of this presentation, we have not independently verified any third-party information and such information is inherently imprecise.

This presentation contains certain non-GAAP financial measures, including non-GAAP operating loss, and gross cash use. Please refer to footnotes where presented on each page of this presentation and the appendix for a GAAP to non-GAAP reconciliation. We believe these non-GAAP financial measures are useful in evaluating our business, results of operations, financial condition and liquidity. However, non-GAAP financial measures should not be considered a substitute for financial information presented in accordance with GAAP.



# COMPANY VISION AND MARKET OPPORTUNITIES

PERCEPTION  
FOR EVERYTHING



PASSENGER  
VEHICLES



COMMERCIAL  
VEHICLES



MOBILITY



MANUFACTURING  
AUTOMATION



SMART  
INFRASTRUCTURE  
AND TRANSPORT



DEFENSE



ROBOTICS



CONSUMER



# Silicon Valley Roots with a Global Footprint

# Key Market Applications

## Automotive



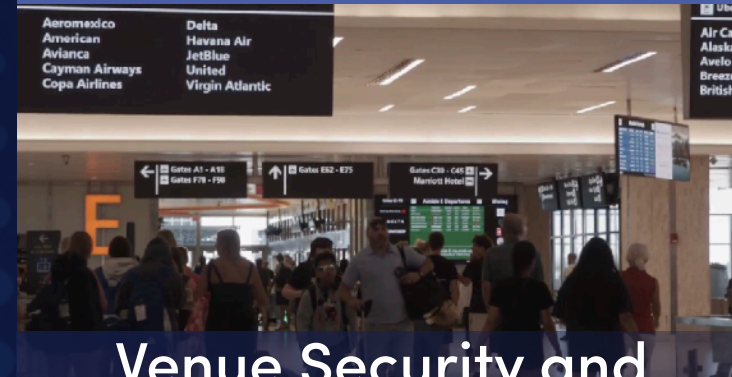
Passenger

## Manufacturing Automation



Quality Control

## Smart Infrastructure and Transport



Venue Security and Management

## Defense



Drones

## Robotics



Humanoids

## Consumer



Consumer Technology



Trucking



Automated Assembly



Traffic Management and Enforcement



Mobility



Vibration and Speed

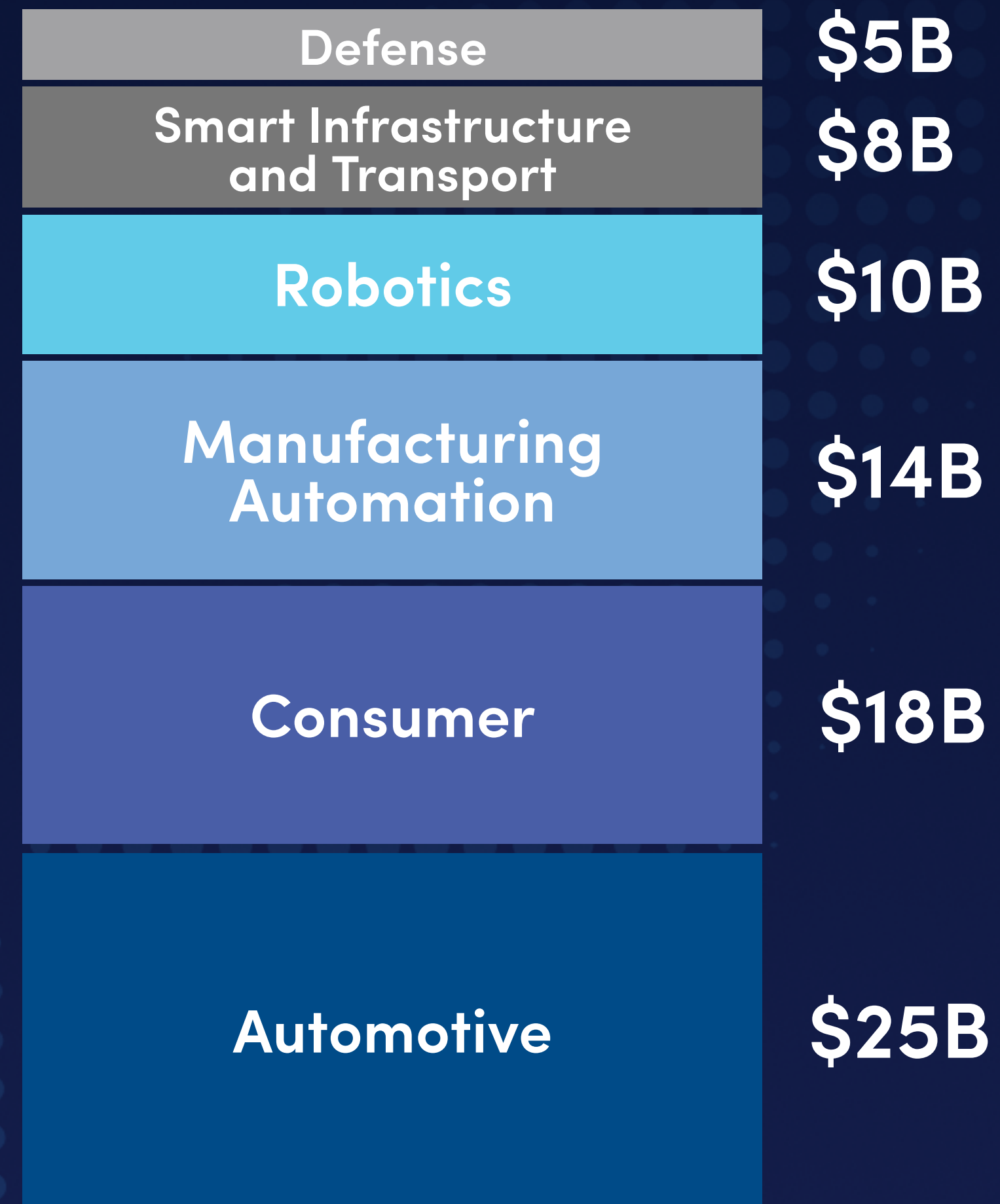


Air and Rail Active Safety



Home Products

# Massive Market Opportunity



**\$80B<sup>1</sup>**

# Leaders Across Industries Choose Aeva

## Automotive

DAIMLER  
TRUCK

TORC

Global Top-10  
Passenger  
OEM

Bendix

## Manufacturing Automation



SICK  
Sensor Intelligence.

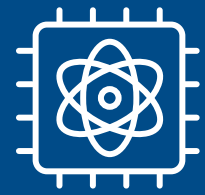


## Smart Infrastructure and Transport

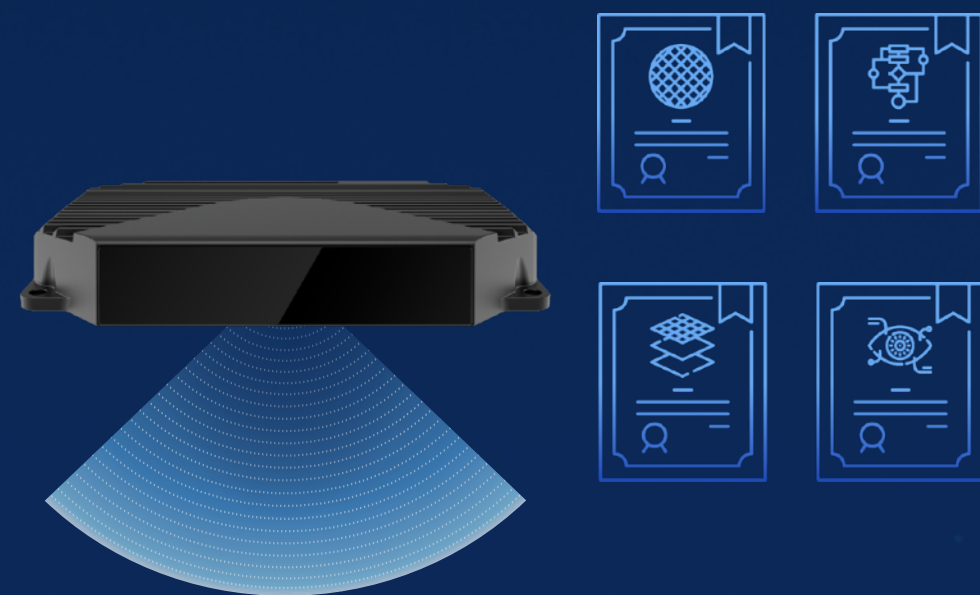


AIRBUS

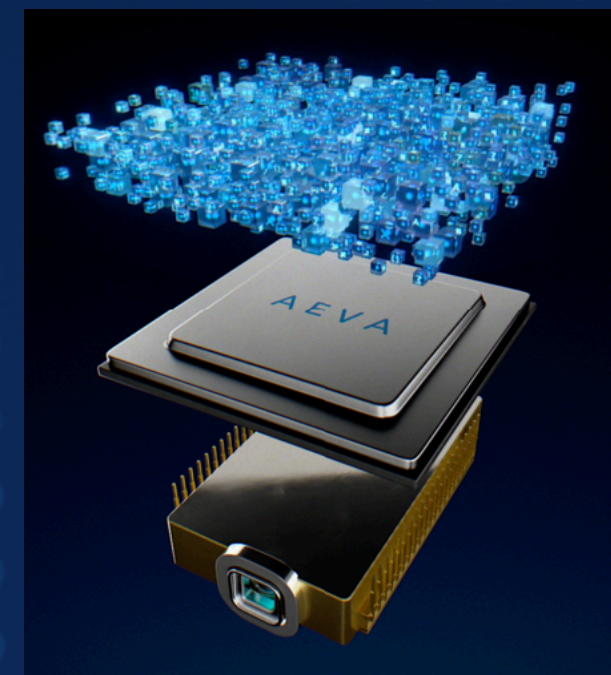
# Positioned to Bring 4D LiDAR to Mass Scale



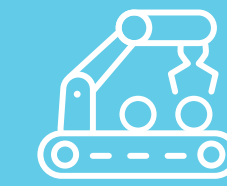
Foundational technology  
with deep IP moat



One perception platform  
for many applications



Leading customers  
across industries



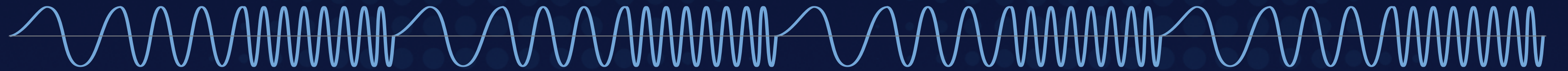
World-class partners to  
bring to mass scale





# TECHNICAL OVERVIEW

# Aeva First Principle Advantages



## AEVA FMCW FOUNDATIONAL ADVANTAGES



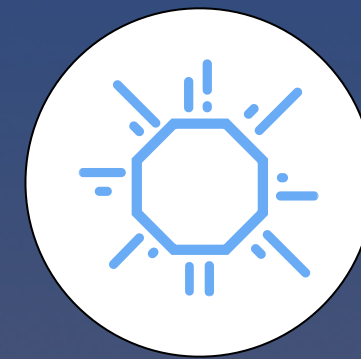
SIMULTANEOUS RANGE  
AND VELOCITY



IMMUNE TO  
INTERFERENCE



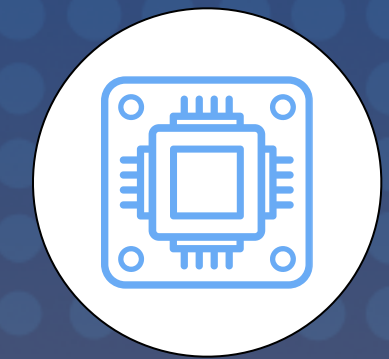
ULTRA-HIGH  
PRECISION



NO BLOOMING OR  
GHOSTING



ULTRA LONG  
RANGE



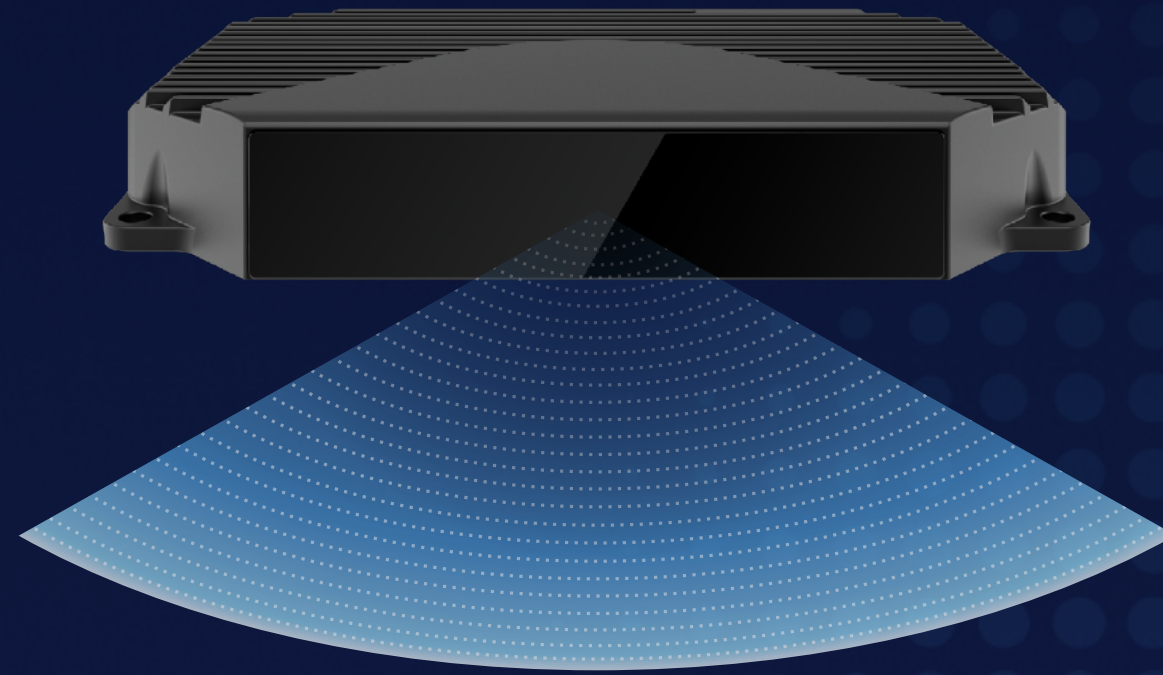
SILICON CHIP  
INTEGRATION

# Aeva First Principle Advantages

## Aeva 4D LiDAR

FMCW

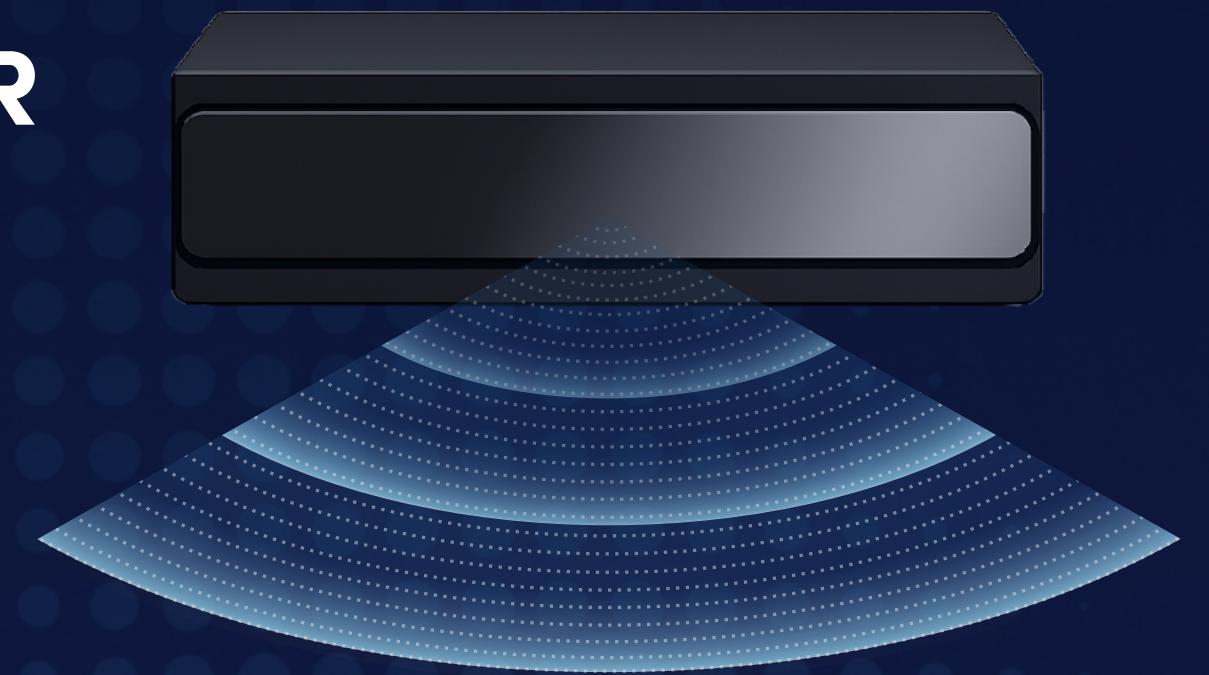
Frequency Modulated  
Continuous Wave



## Legacy 3D LiDAR

ToF

Time of Flight



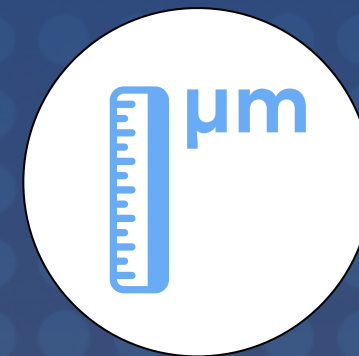
### AEVA FMCW



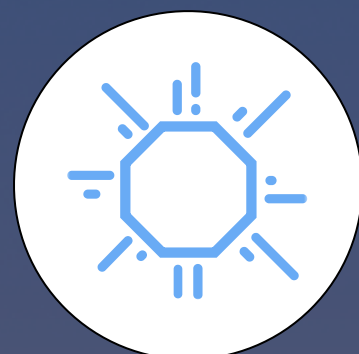
SIMULTANEOUS  
RANGE AND VELOCITY



IMMUNE TO  
INTERFERENCE



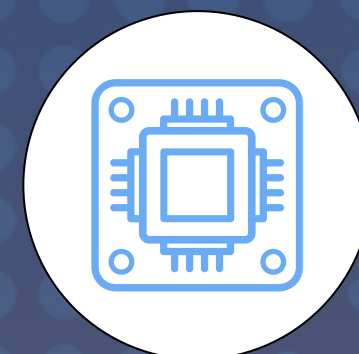
MICRON  
PRECISION



NO BLOOMING  
OR GHOSTING



ULTRA LONG RANGE



SILICON CHIP  
INTEGRATION

### TIME OF FLIGHT



RANGE ONLY



SUSCEPTIBLE TO  
INTERFERENCE



NOT HIGH  
PRECISION



SUSCEPTIBLE  
TO BLOOMING

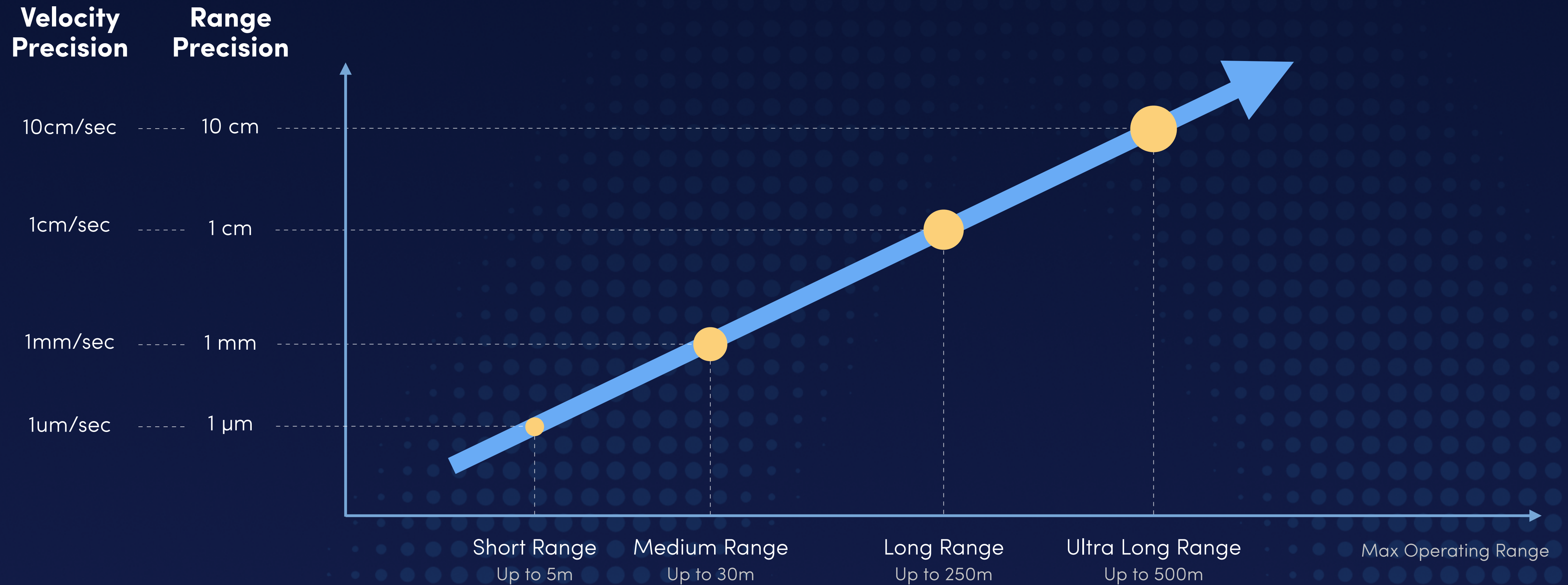


RANGE LIMITED



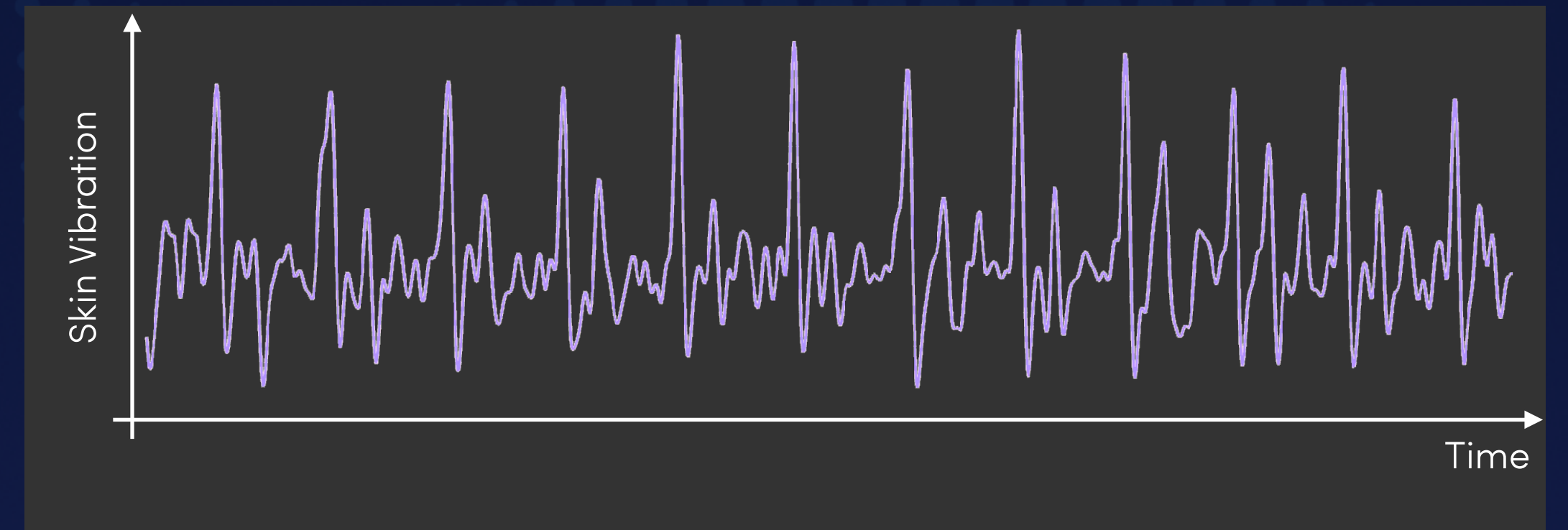
DISCRETE  
COMPONENTS

# Precision for Every Range



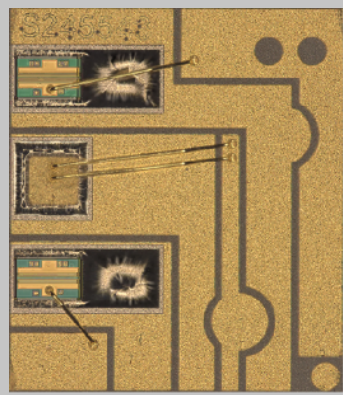
Aeva FMCW technology can deliver micron-level precision at short range and centimeter-level precision beyond 500 meters – all on a scalable platform.

# Contactless Biometric Sensing

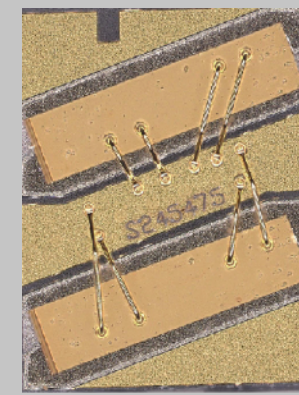


Aeva's micron-level vibration can enable new applications such as biometrics

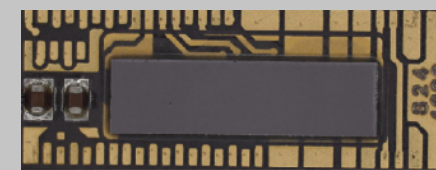
# Key Building Blocks



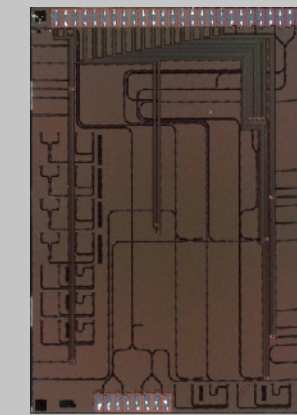
Laser



Semiconductor  
Optical  
Amplifier (SOA)



Laser Driver  
and TIA ASIC



Silicon Photonics  
Integration



X1 LiDAR  
Processing SoC

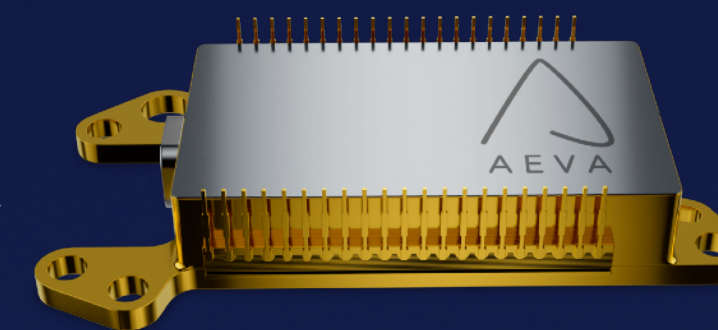
# One Unified Perception Platform



PERCEPTION  
SOFTWARE



SYSTEM-ON-CHIP  
PROCESSOR



COREVISION  
LIDAR-ON-CHIP  
MODULE

# One Platform Powering Multiple Markets



COMMON PLATFORM FOR MULTIPLE PRODUCTS



Atlas



Atlas  
Ultra



Eve-1D

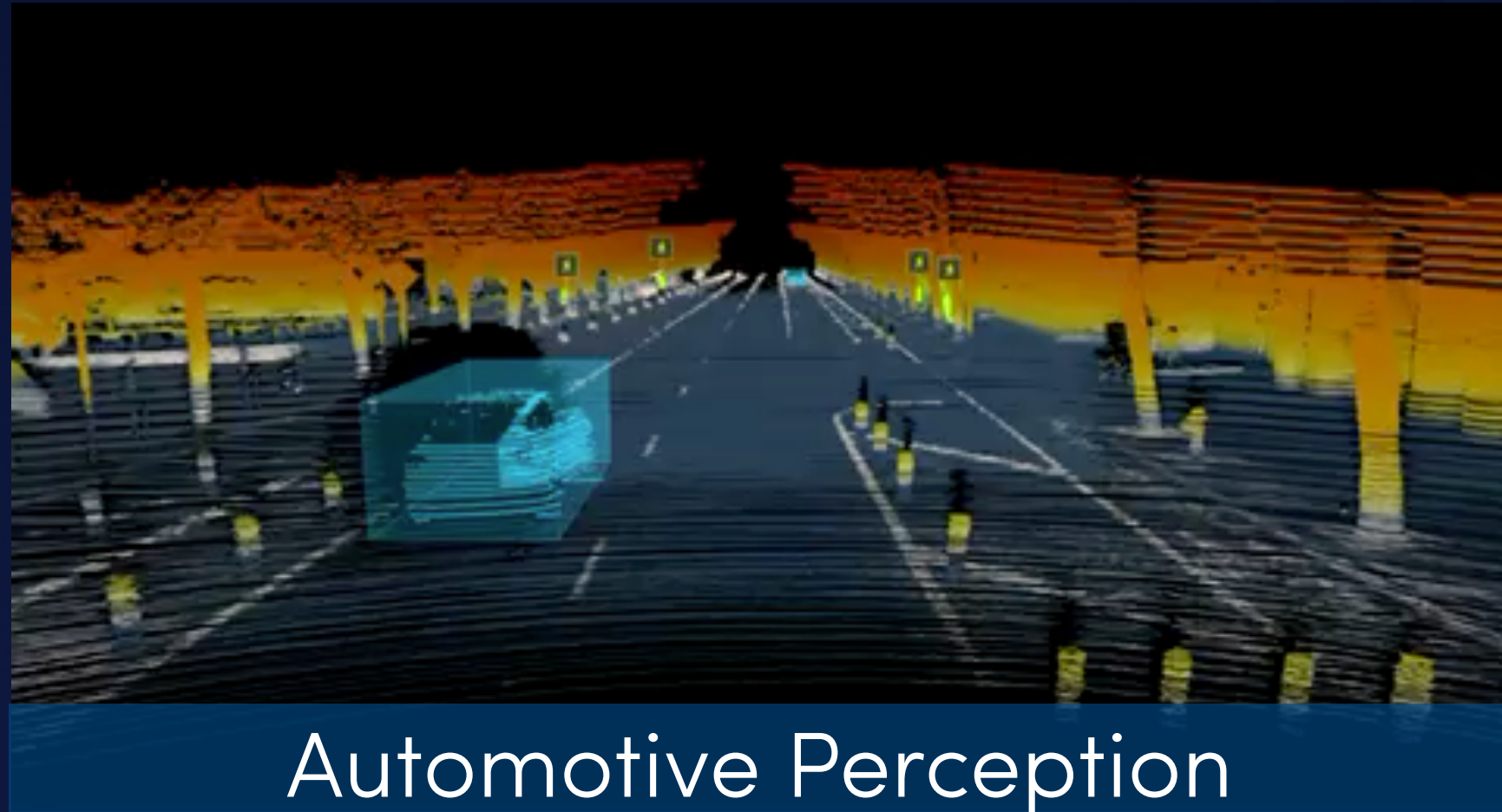


Eve-1V



Atlas  
Orion

# Adaptable AI Perception Software



Automotive Perception



Smart Infrastructure



Manufacturing Automation



Speed Enforcement

# Expansion in New Markets

Defense



Drones

Robotics



Humanoids

Consumer



Consumer  
Technology



Home Products

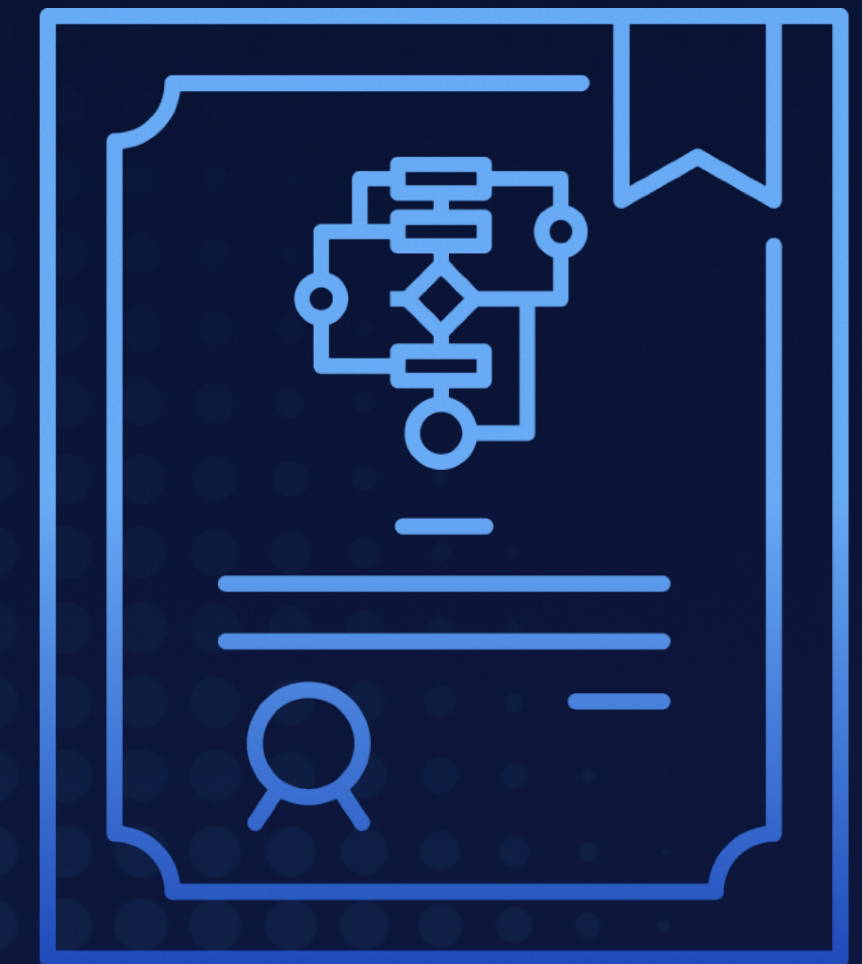
# Leader in FMCW with Strongest IP Portfolio

## 245+ Patents Granted

Industry-leading Portfolio of FMCW IP  
With Additional 150+ Patents Pending



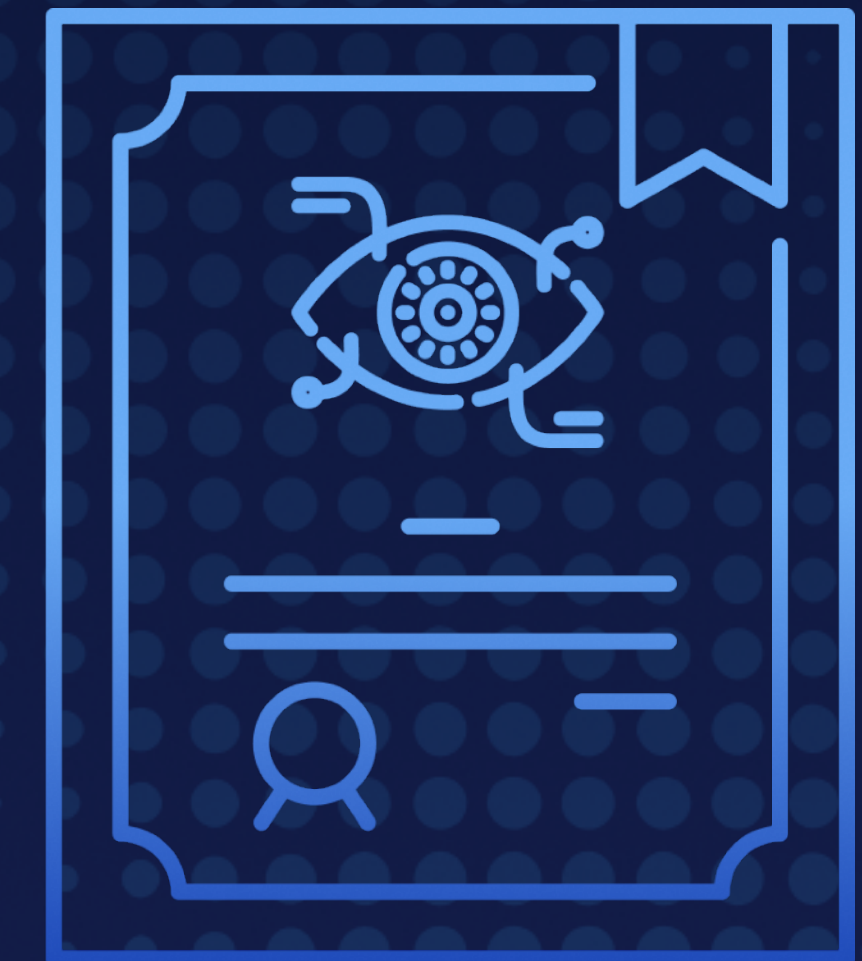
Silicon Photonics



Algorithms



System Design

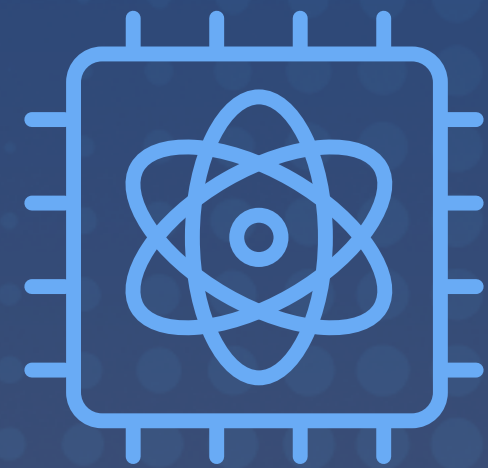


4D Perception

# Technology Moat



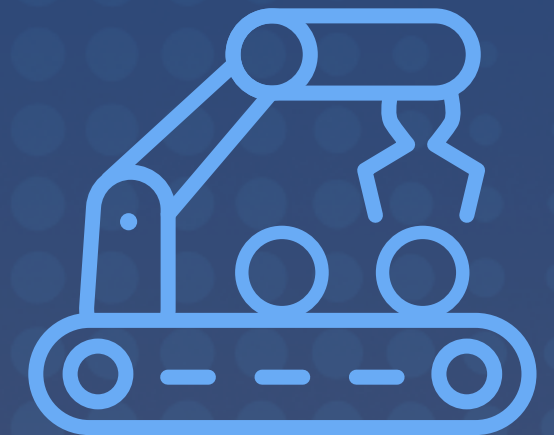
**\$500M+ in  
Research &  
Development**



**8+ Years  
Deep Tech  
Development**



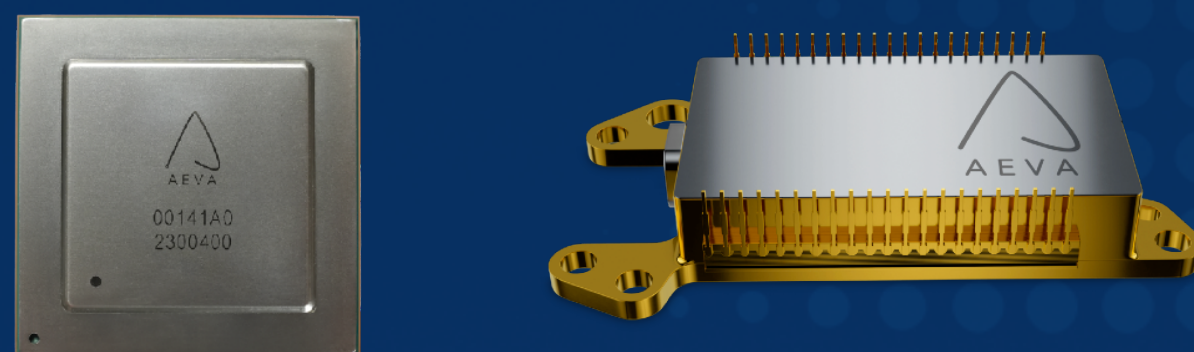
**Vertically  
Integrated  
FMCW Platform**



**Established  
Production Line**

# Aeva Leading Next Generation of Perception with Chip Platform

Today



LiDAR-on-chip +  
processing-on-chip,  
production-ready

Next Gen



All-in-one chip,  
10x lower power



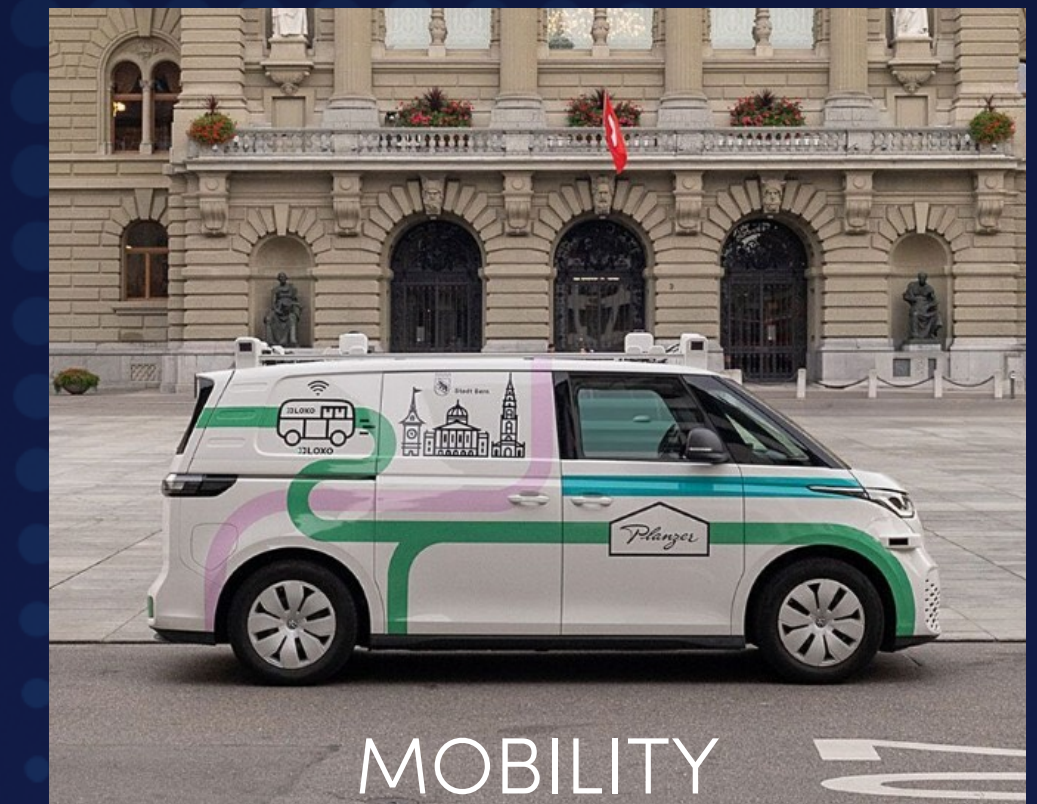
# AUTOMOTIVE MARKET OVERVIEW

# Built for the Future of Automotive



# \$25B

Automotive  
Market Opportunity



# Then vs. Now



## > 10 Years Ago

- \$\$\$\$ Prohibitive
- Performance Limited
- R&D only



## Today

- \$ In Line with other Sensors
- Exceeds Performance
- Automotive Qualified & Manufactured at Scale

# Aeva is Future Proof for Automotive

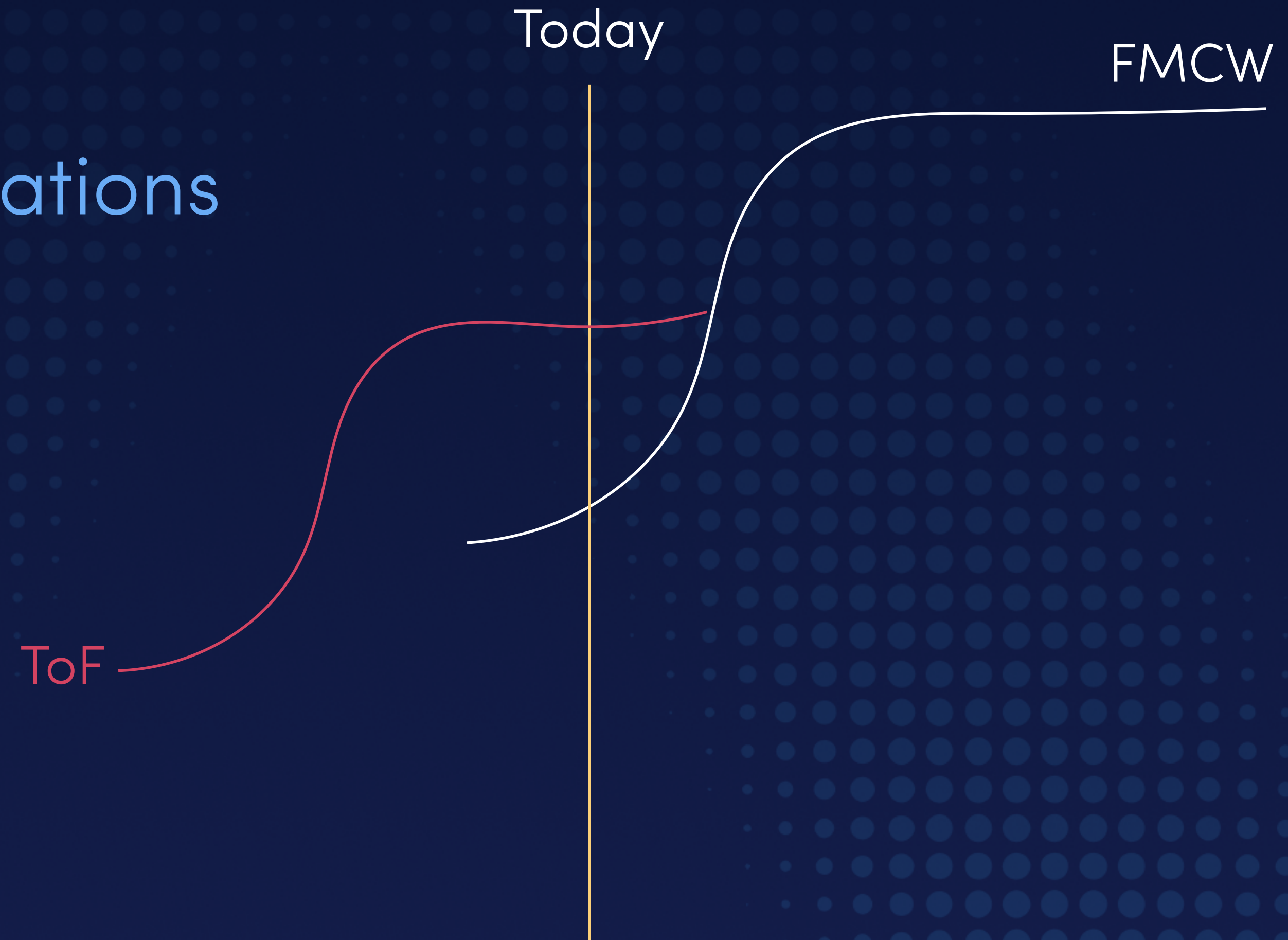
## Aeva FMCW Addresses ToF Limitations

Velocity Measurement with Every Point

Long Range and High Resolution

Immunity to Interference and Blooming

On-Sensor Perception and Localization



# Aeva Atlas Products

Atlas



Atlas Ultra



INSTANT VELOCITY  
DETECTION



ULTRA LONG  
RANGE



HIGH RESOLUTION



WIDE FOV



AUTOMOTIVE  
GRADE



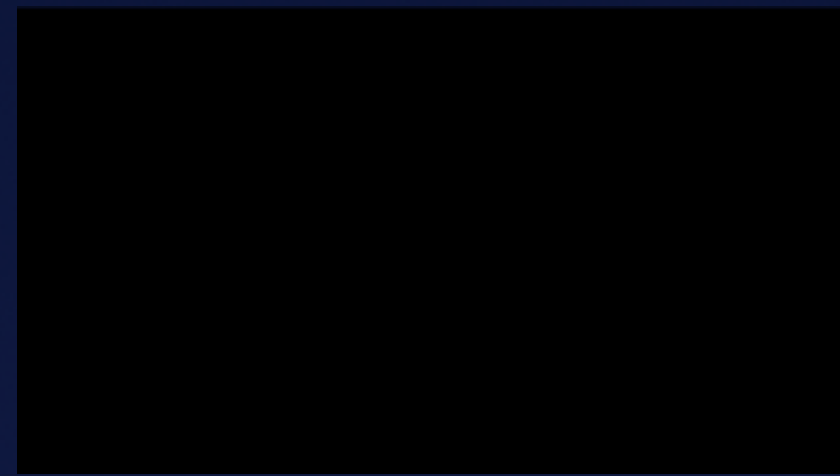
NO BLOOMING OR  
GHOSTING



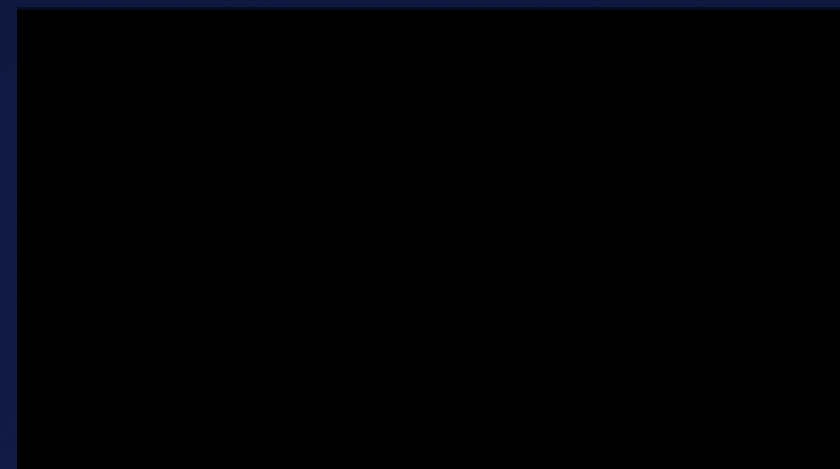
IMMUNE TO  
INTERFERENCE

# Autonomous Trucking

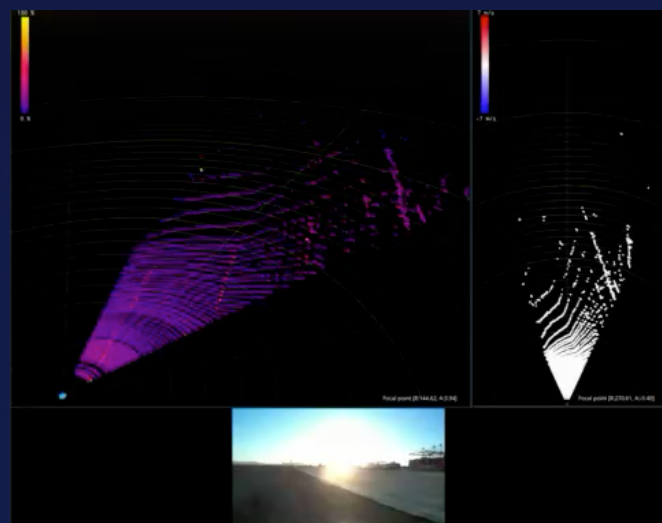
Aeva Enables Key Perception Use Cases



Dynamic object detection and tracking out past 400m



Stopped vehicle in roadway beyond 250m

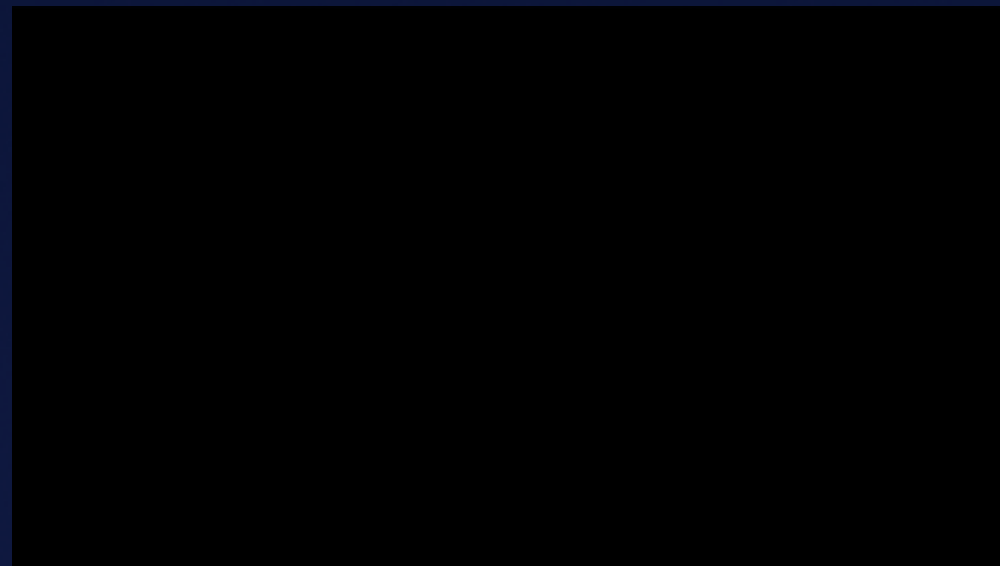


Maintained performance in adverse environments

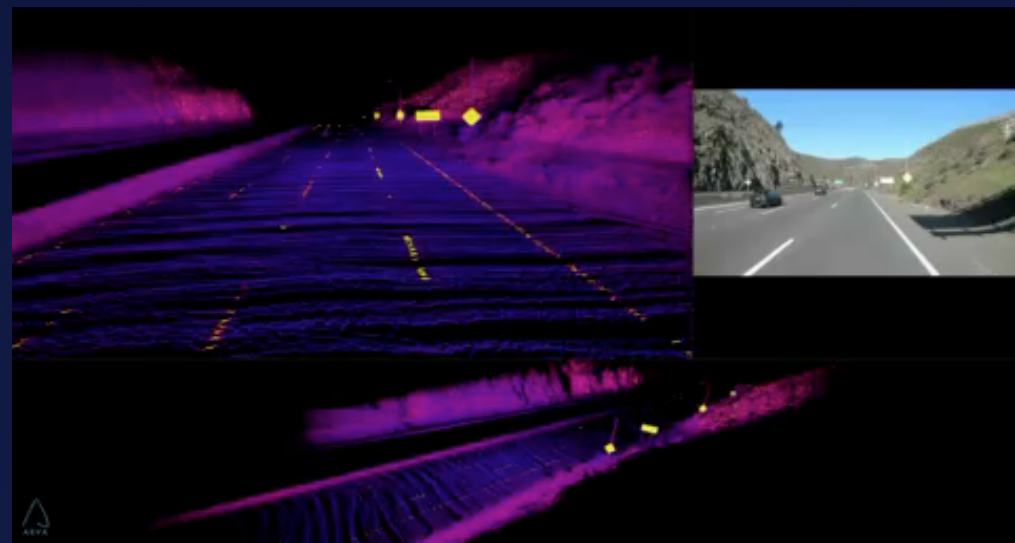


# Passenger Car & Mobility

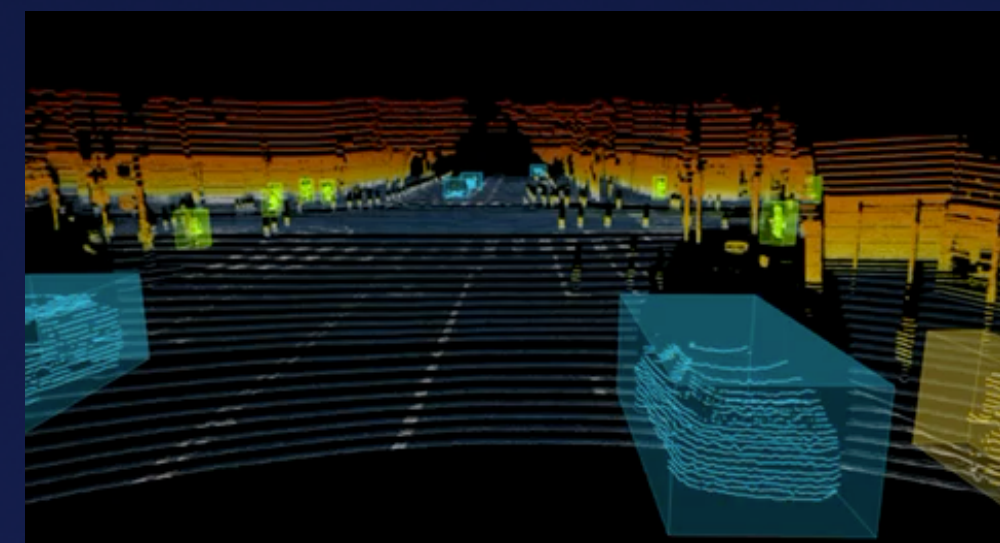
Aeva Enables Higher Level of Autonomy



Detects small hazards like tires or debris beyond 150m



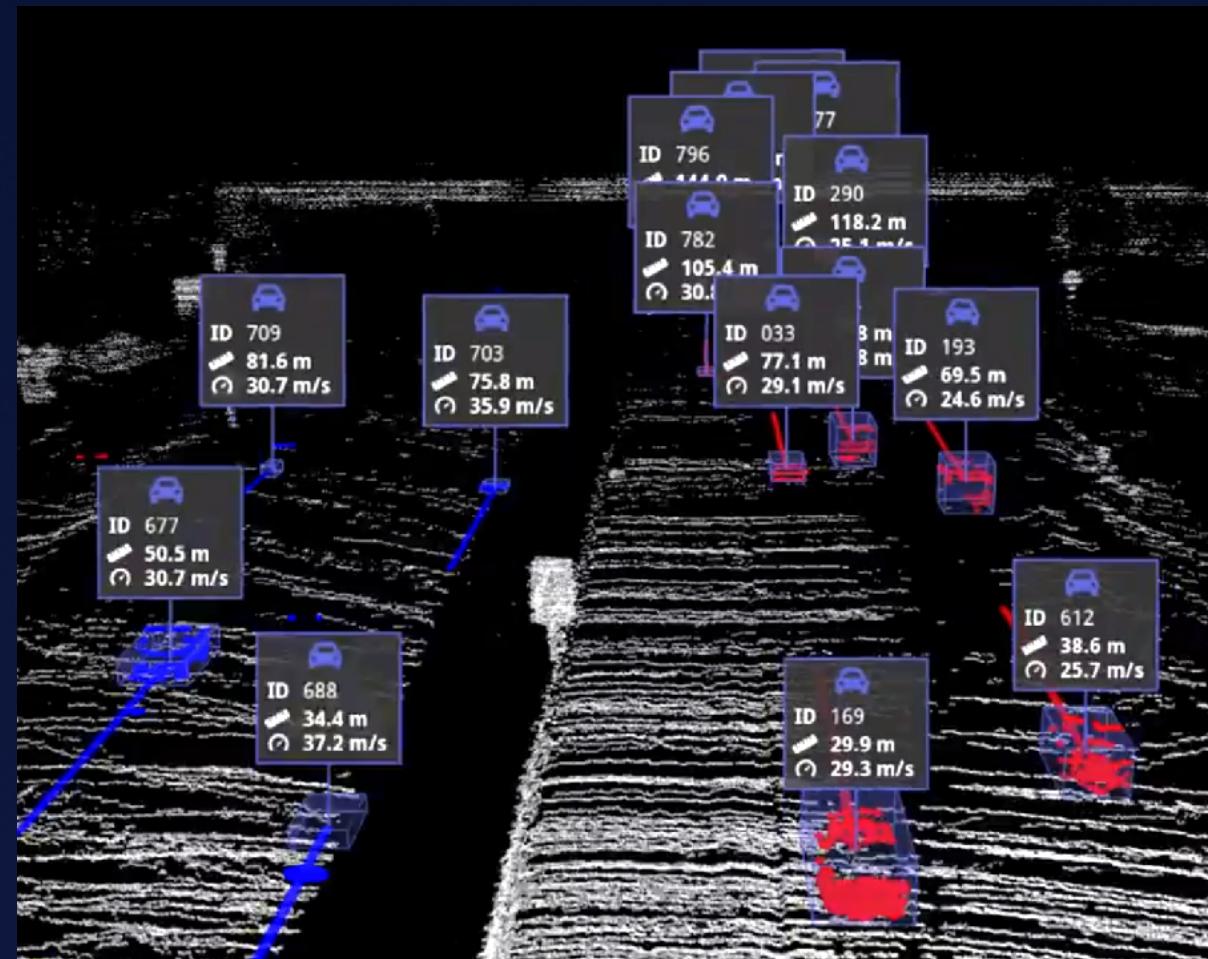
No blooming — accurately sees objects near signs and lane markings



Tracks close cut-ins and handles complex urban scenarios

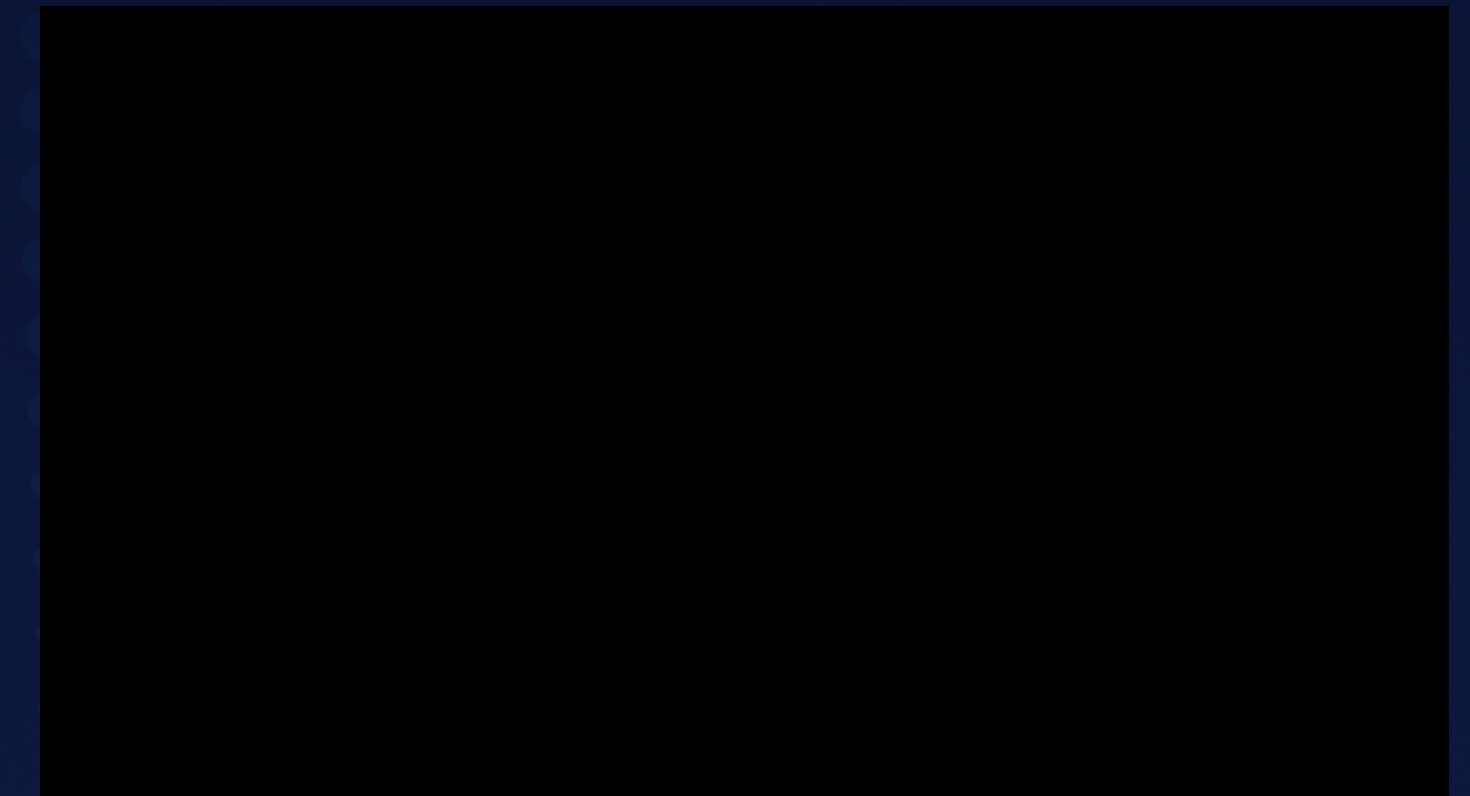


# On-Sensor Perception

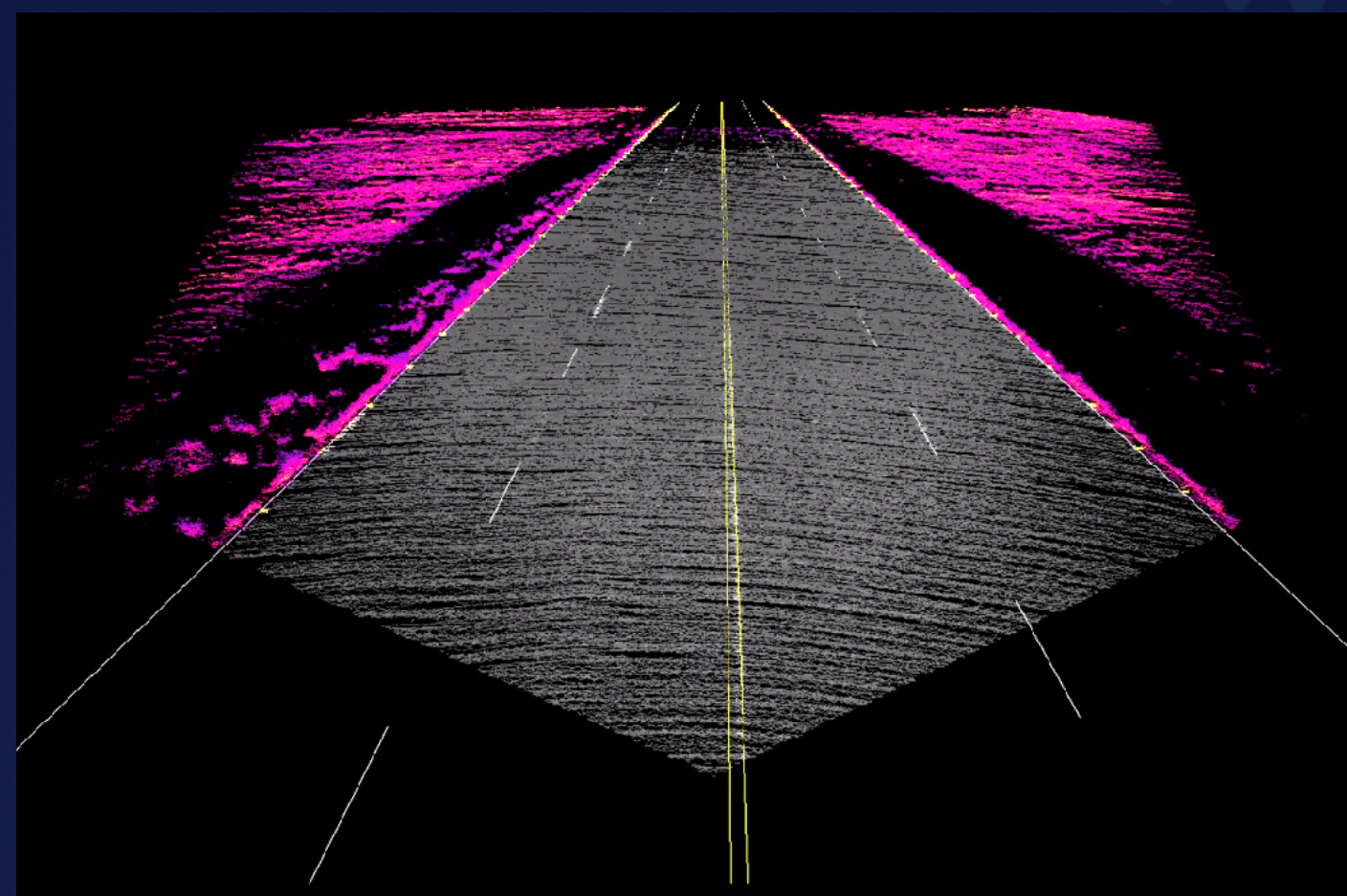


Dynamic Object Classification and Tracking

Reduce Cost of Central Processing

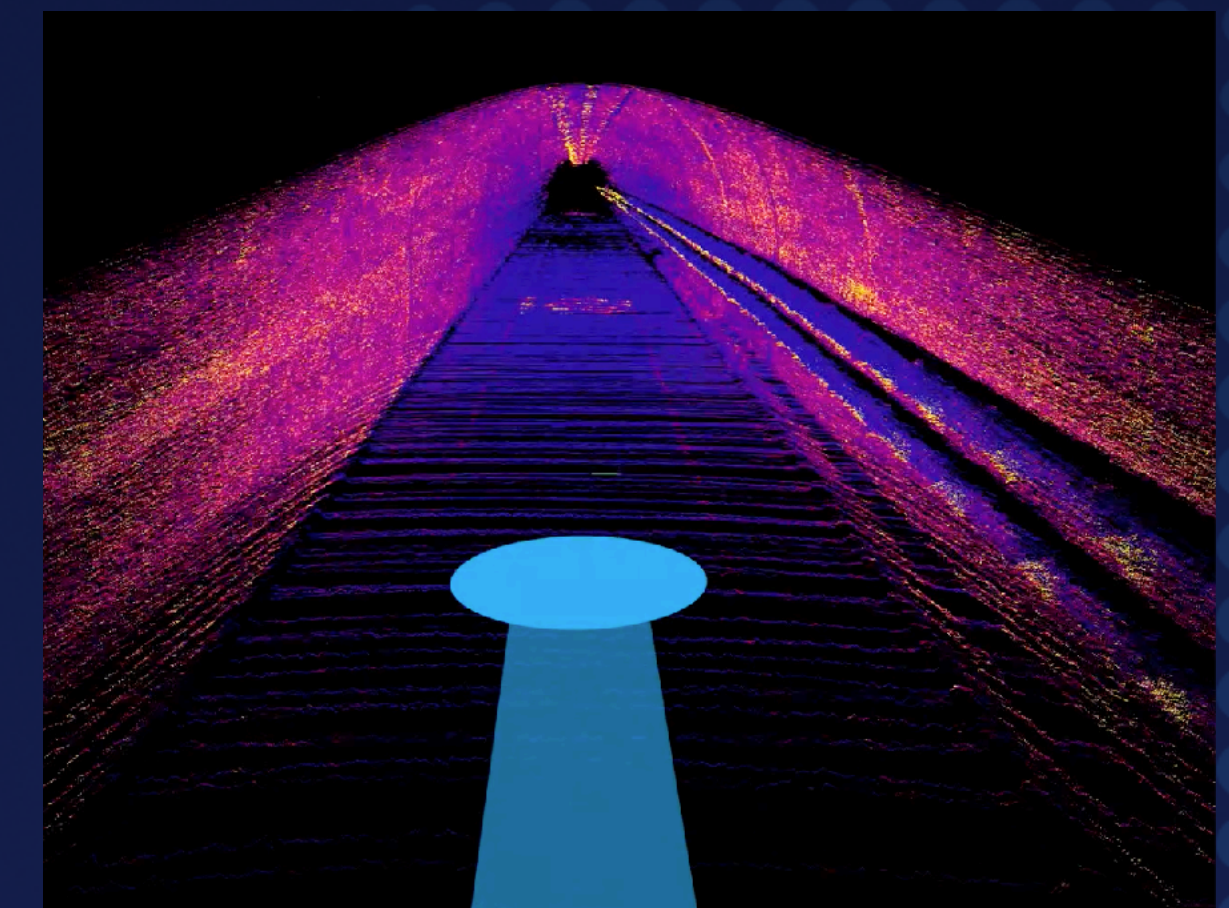


Stationary Object Classification and Tracking



Drivable Region and Lane Lines

Provide Backup Safety Perception for OEMs

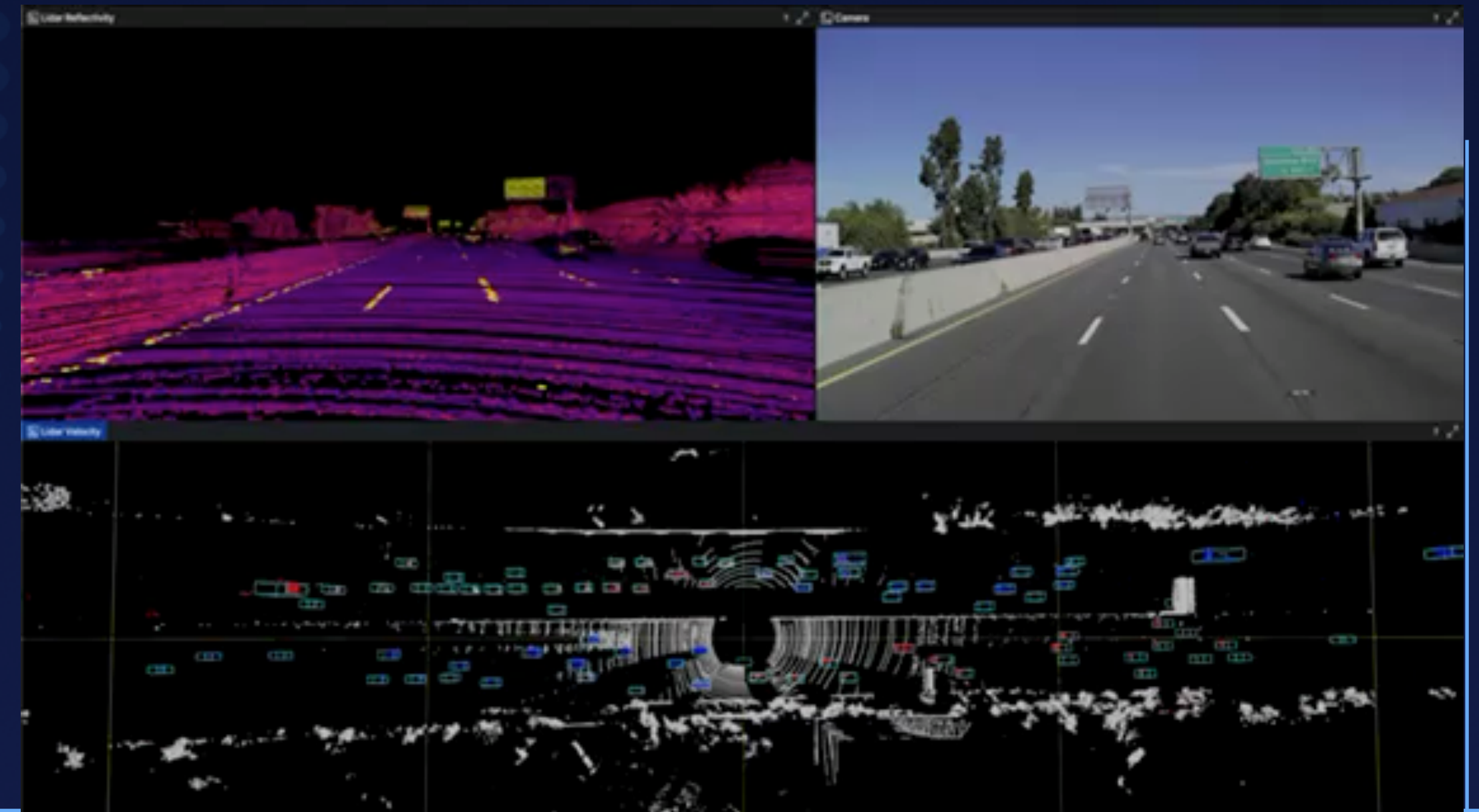


Vehicle State Estimation

# Aeva Public Dataset Now Available



URBAN SCENARIO



HIGHWAY SCENARIO



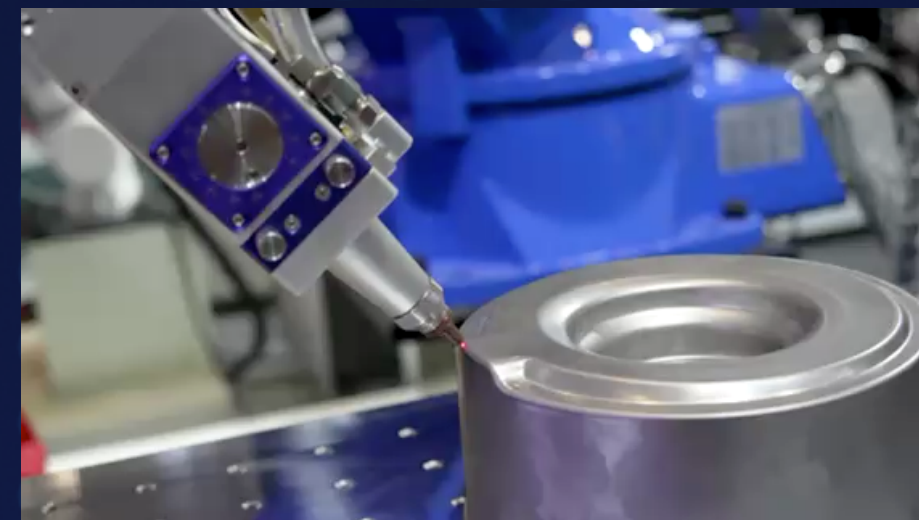
# MANUFACTURING AUTOMATION MARKET OVERVIEW

# Aeva Precision LiDAR – Revolutionize Sensing for Manufacturing Automation

**\$14B**

Manufacturing Automation  
Market Opportunity

## Manufacturing Automation



Quality Control



Automated  
Assembly



Vibration and Speed

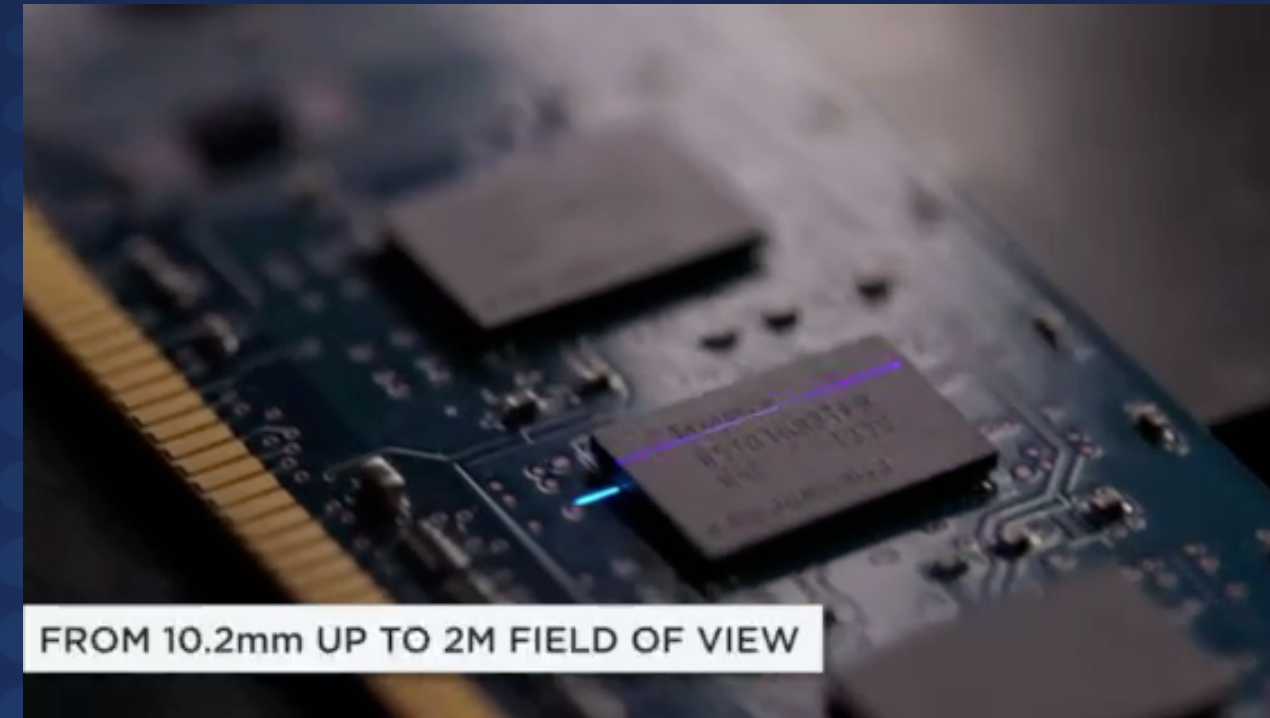
# Sensing Segments in Manufacturing Automation

## 1D Scanning Displacement



DISTANCE SENSING  
VIBROMETRY  
VELOCIMETRY

## 2D Scanning Line



VOLUME MEASUREMENT  
GAP AND FLUSH  
IN-LINE INSPECTION

## 3D Scanning Area

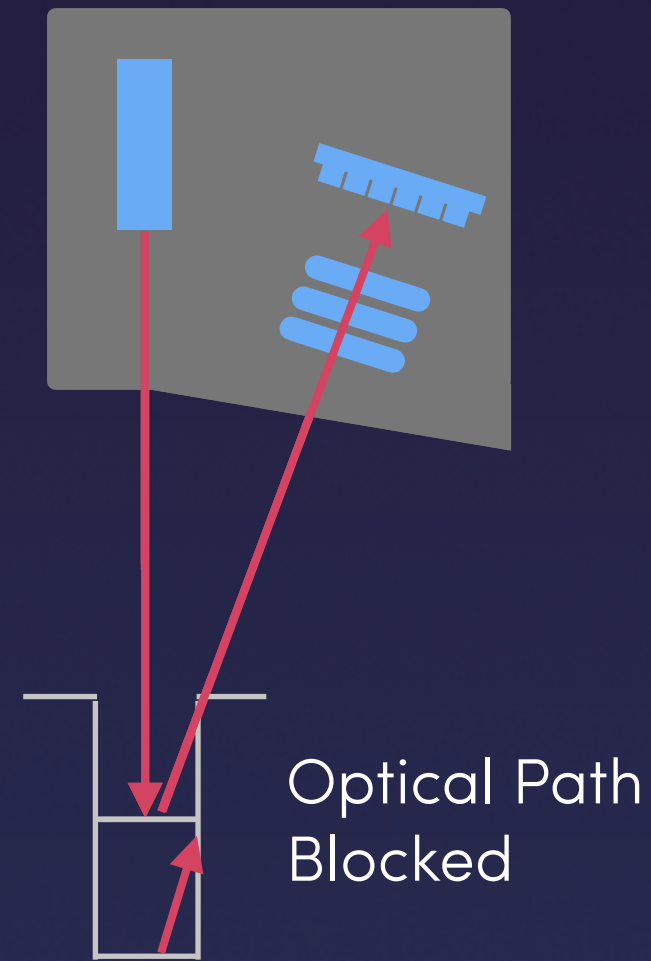


3D SNAPSHOT  
ROBOTIC GUIDANCE  
METROLOGY

Aeva can capture these market using one platform architecture

# AEVA FMCW Advantages over Triangulation

## Legacy Technology (Triangulation)

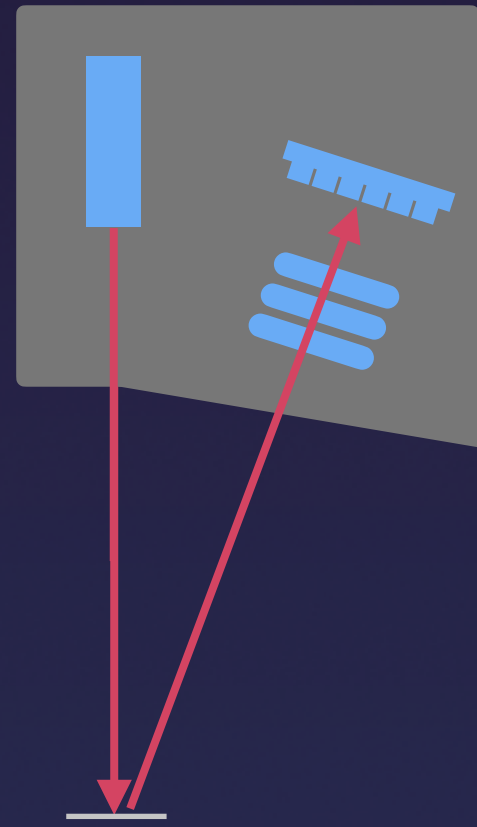


Standoff Range = 0.1m - 1m

- How Triangulation Sensors Work?
- Achieving High Precision Limits Operating Depth of Field
- Steps, Ridges and Troughs Cause Occlusions
- Limited Standoff Distance, Requires Sensor Design Changes

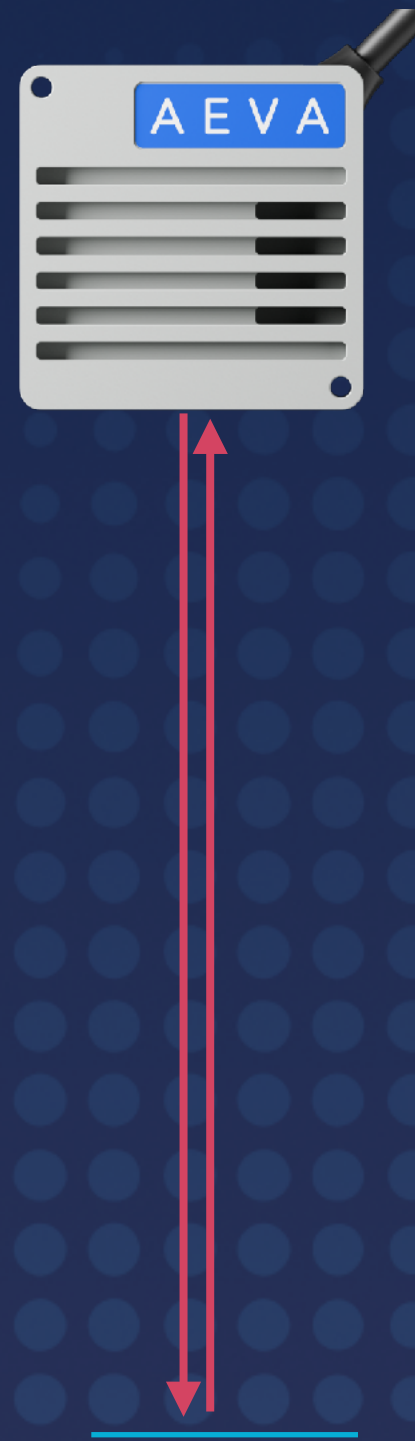
# AEVA FMCW Advantages over Triangulation

## Legacy Technology (Triangulation)



Standoff Range = 0.1m - 1m

## AEVA (FMCW)

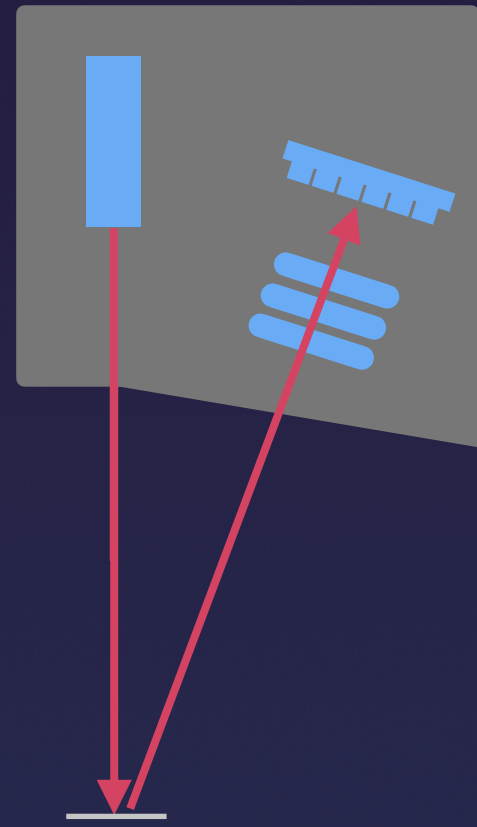


Standoff Range = 0.1m - 20m

- Co-Axial - Interferometry Based Design
- Wide Depth of Field
- No Occlusions
- One Design for a Wide Range of Standoffs
- Simultaneously Measures Velocity / Vibration
- Same Design Supports Tangential Velocity

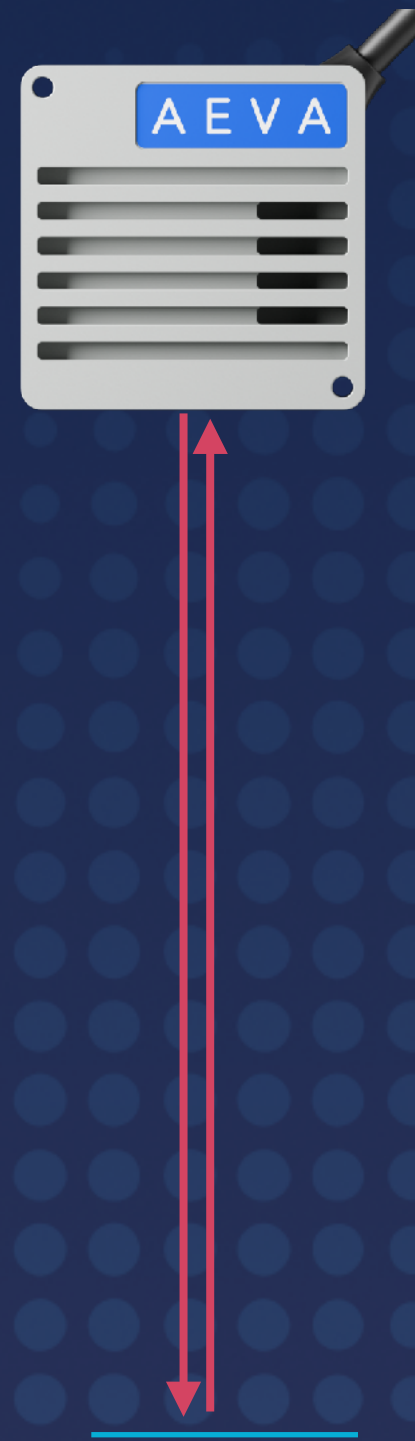
# AEVA FMCW Advantages over Triangulation

Legacy Technology  
(Triangulation)

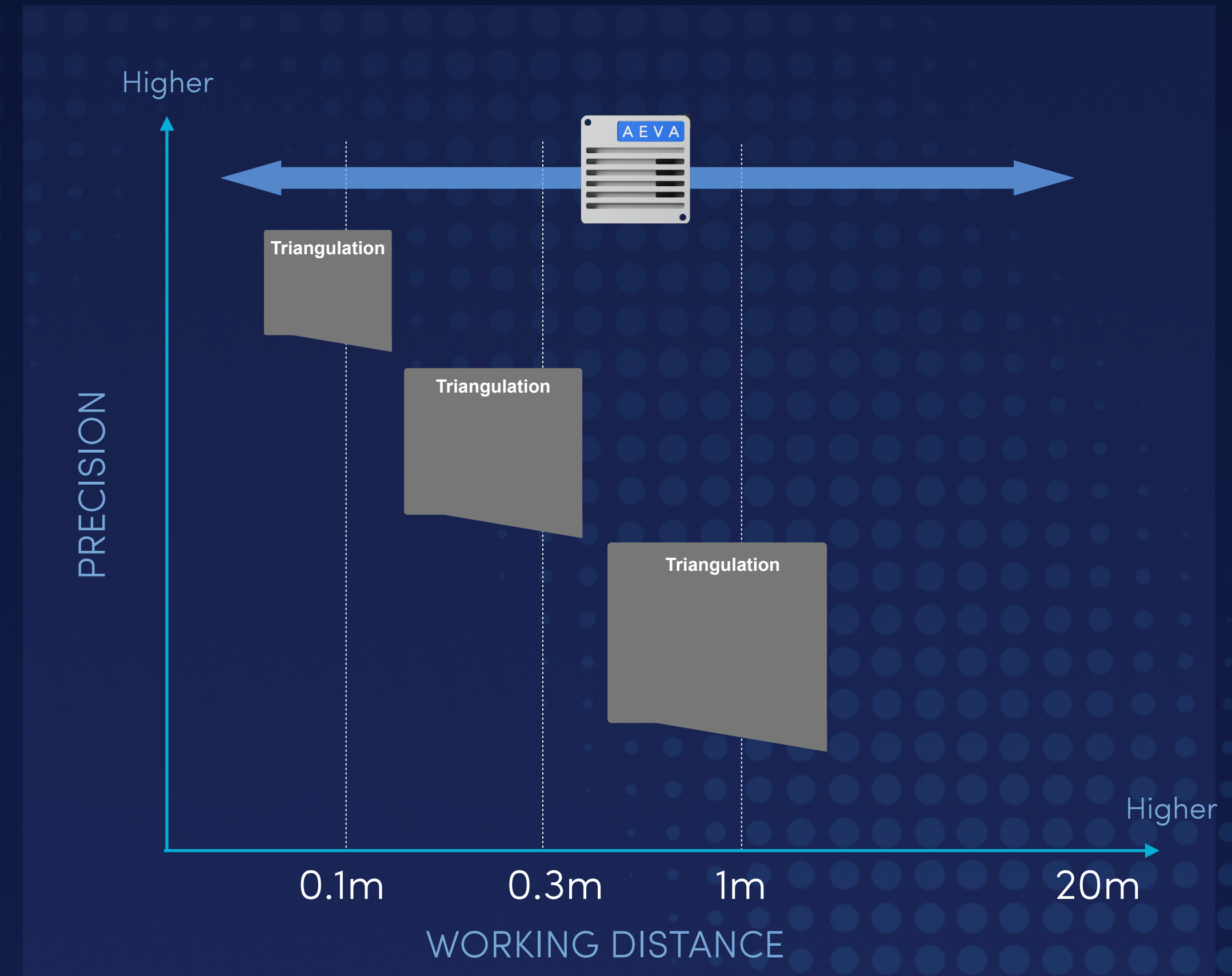


Standoff Range = 0.1m - 1m

AEVA  
(FMCW)



Standoff Range = 0.1m - 20m



High Precision Across Multiple Market Elements with One Form Factor

# AEVA EVE 1D

World's First FMCW high-precision laser sensors for manufacturing automation applications



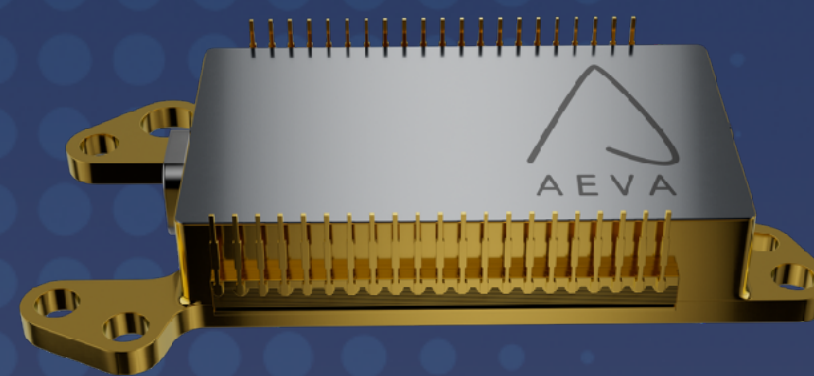
AEVA EVE 1D  
DISPLACEMENT SENSING



INTERNAL CALIBRATION  
REFERENCE



PERCEPTION  
SOFTWARE



AEVA COREVISION FOR  
PRECISION SENSOR



AEVA EVE 1V  
VELOCITY SENSING

# Industry Leaders Choose AEVA





# SMART INFRASTRUCTURE AND TRANSPORT OVERVIEW

# Smart Infrastructure and Transport Industry

\$8B

Smart Infrastructure  
and Transport  
Market Opportunity



# Powering Smart Infrastructure

Leveraging Automotive product for the smart infrastructure market



COMMON PLATFORM FOR MULTIPLE PRODUCTS



Atlas



Atlas Orion

# Airport and Venue Security and Management



**THE NEW TERMINAL ONE**  
JFK INTERNATIONAL AIRPORT

Image courtesy of Gensler



Tampa  
International  
Airport

Image courtesy of Hensel Phelps and HNTB, in association with Gensler

# Infrastructure Security

“Aeva’s 4D LiDAR gives us a new tool to detect potential threats in challenging environments where traditional sensors often fall short. Its ability to operate reliably in darkness, glare, and complex weather conditions makes it well-suited for our mission.”

– JR Russell, Distinguished Member of Technical Staff, Sandia National Laboratories



**Sandia  
National  
Laboratories**

# Intelligent Transportation Solutions

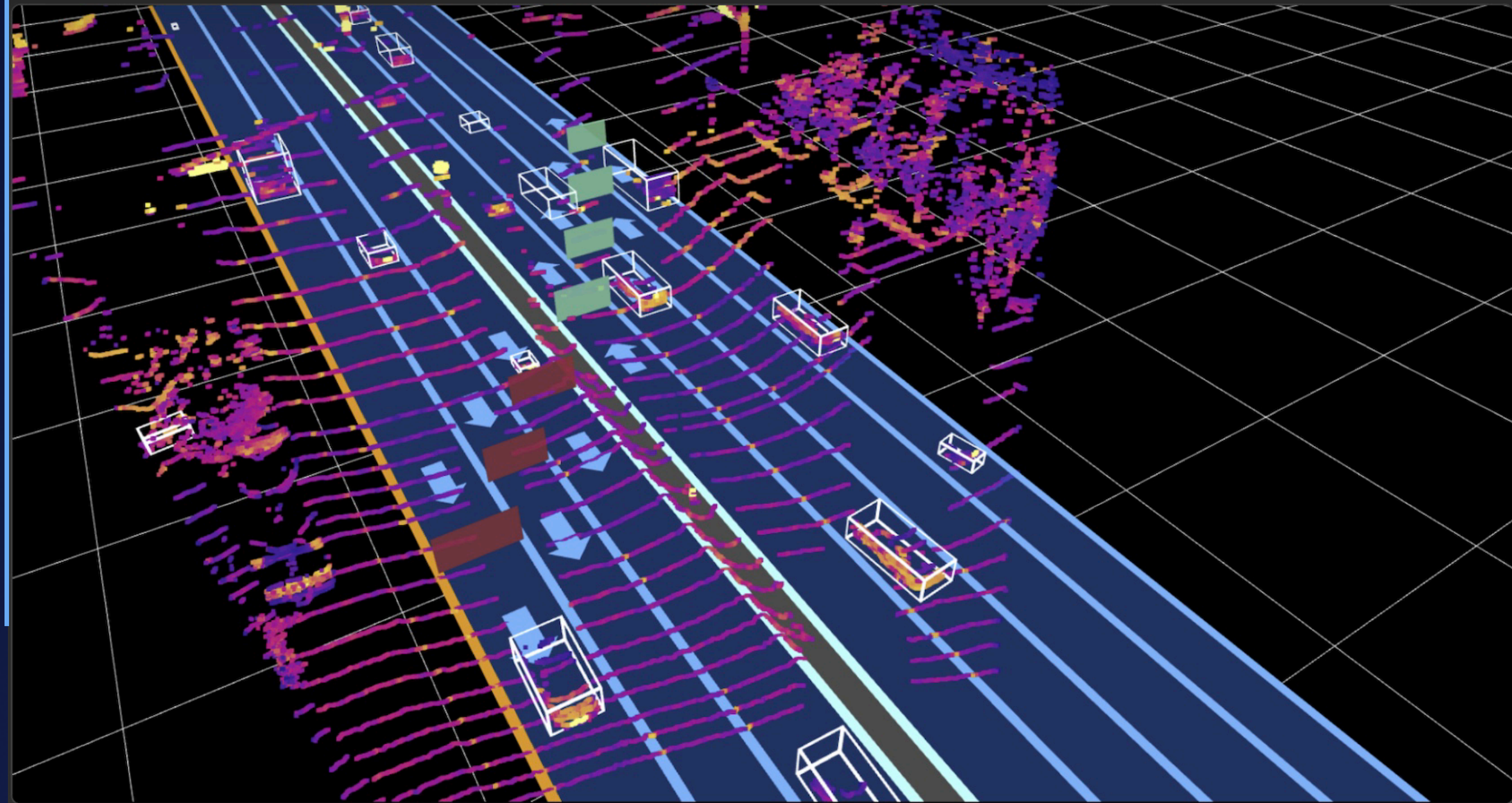
Aeva's advantages enable:

- Smarter intersection control
- More accurate vehicle counting
- Real-time situational awareness
- Reliable performance across weather and lighting conditions



“Aeva’s FMCW technology gives us an additional level of precision and reliability in speed verification that’s unmatched by other traditional lidar. With Aeva’s instantaneous velocity data and long-range performance, we’re able to capture accurate measurements in real time—even in complex traffic conditions.”

*Enzo Dri  
Managing Director  
Sensys Gatso Australia*



# Air and Rail Active Safety



# Driving the Future

A True Partnership for Future Mobility

# Together



x



**LG Innotek**

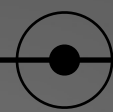


1970 **Founded**

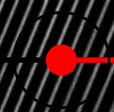
1990s



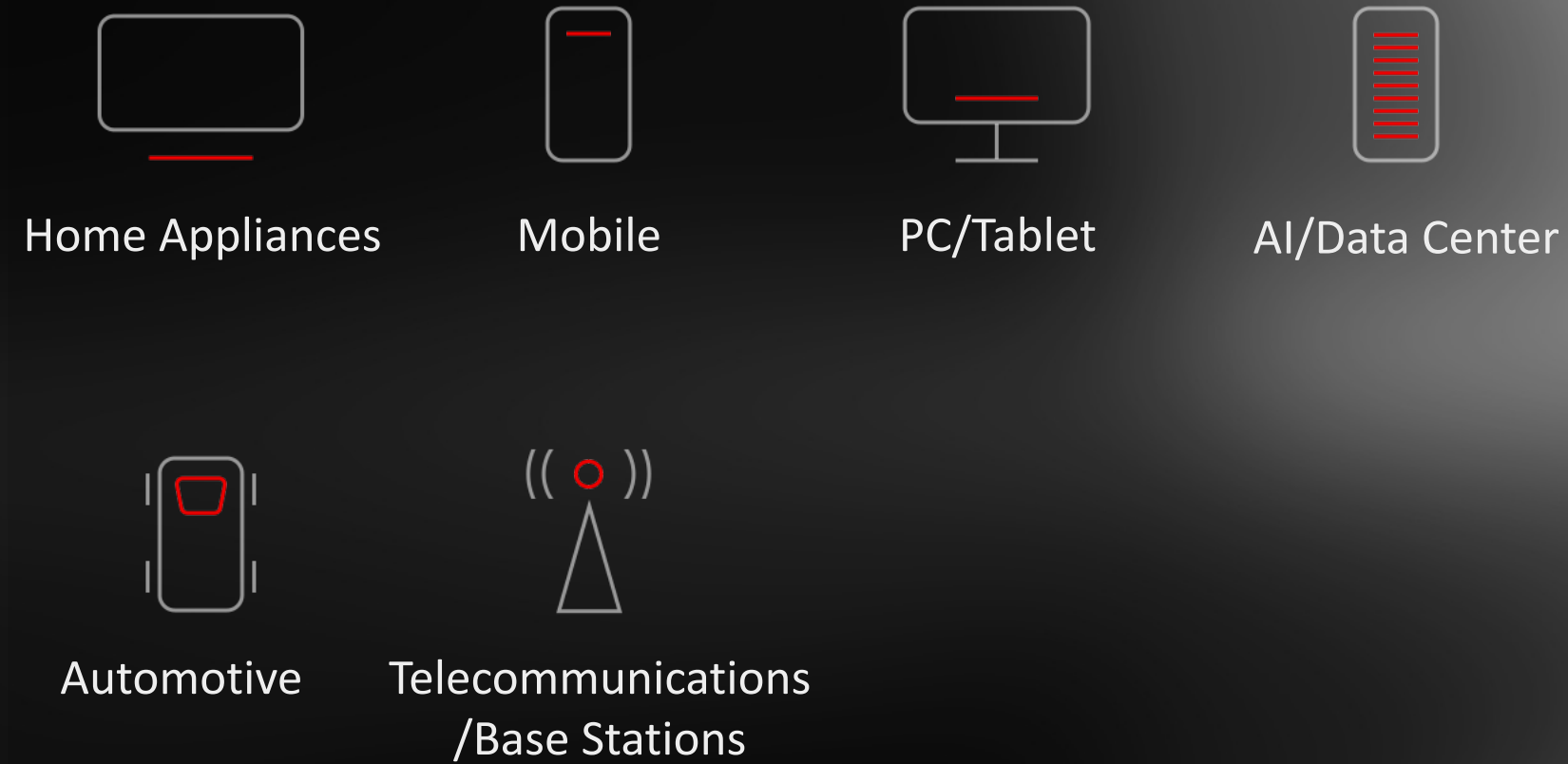
2000s



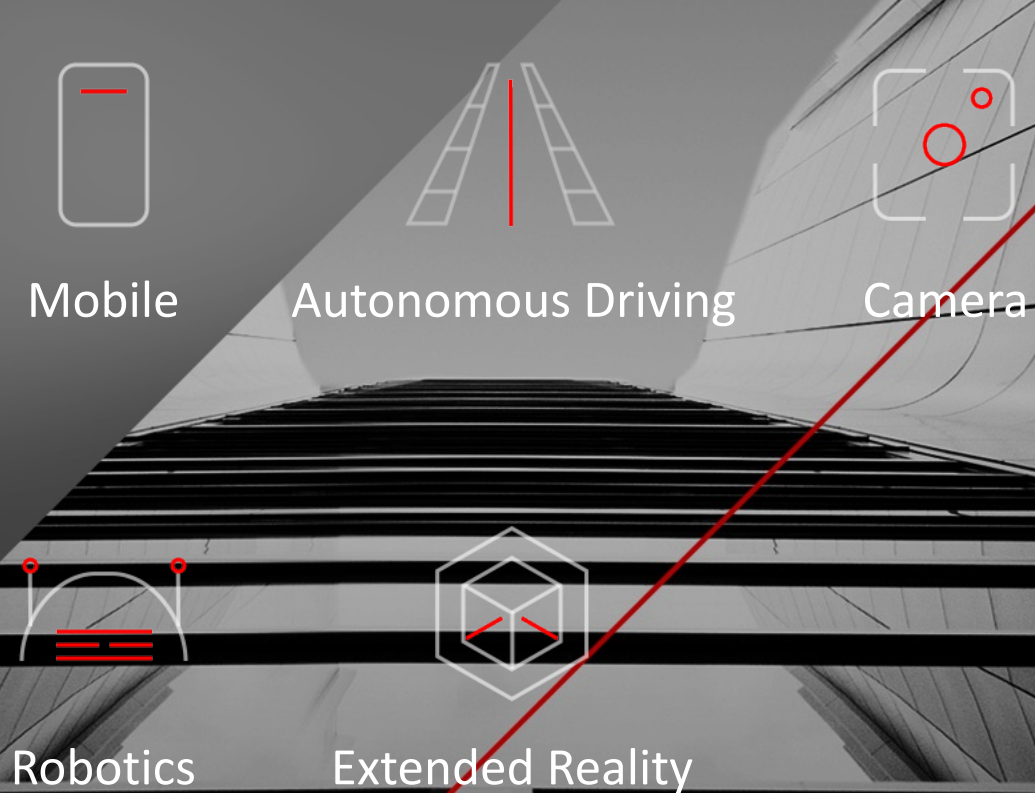
2010 ~ 2020s



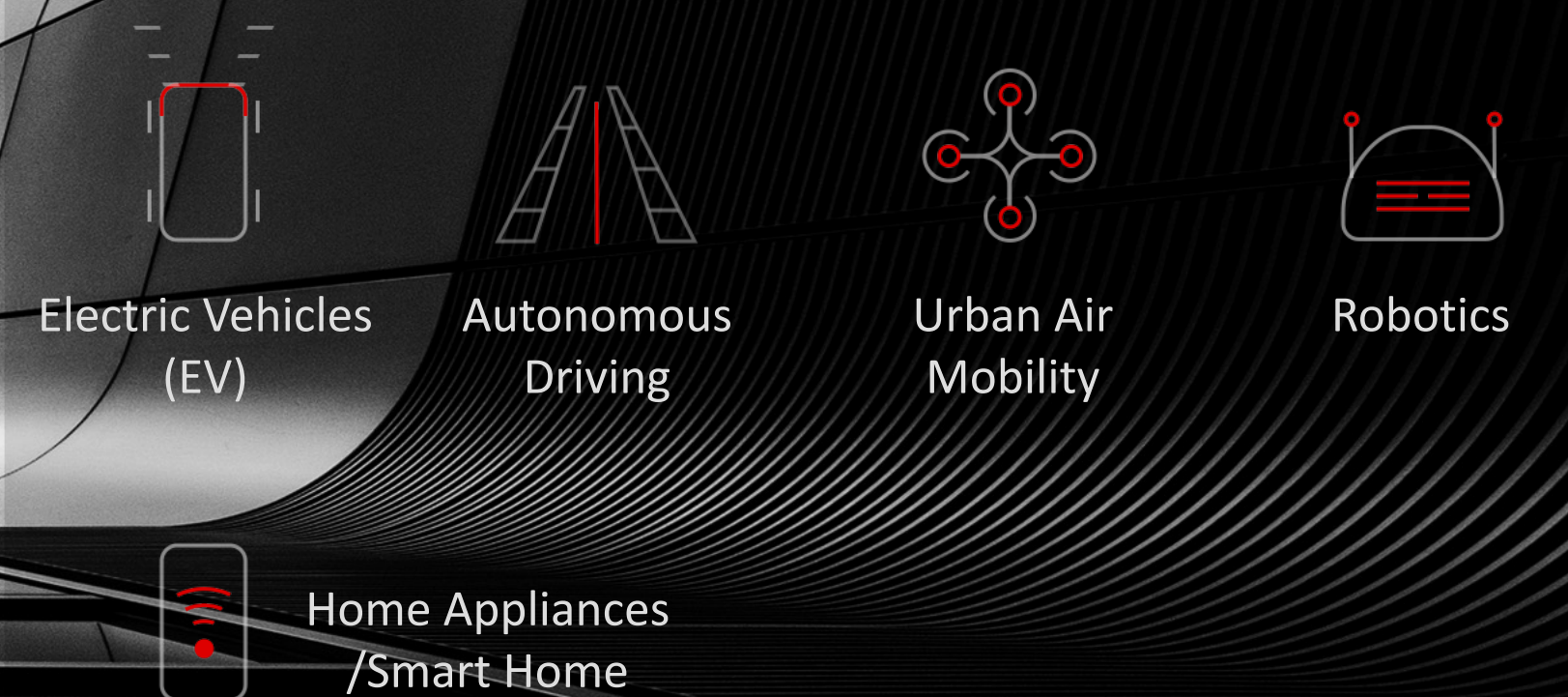
## Substrate & Material



## Optics Solution

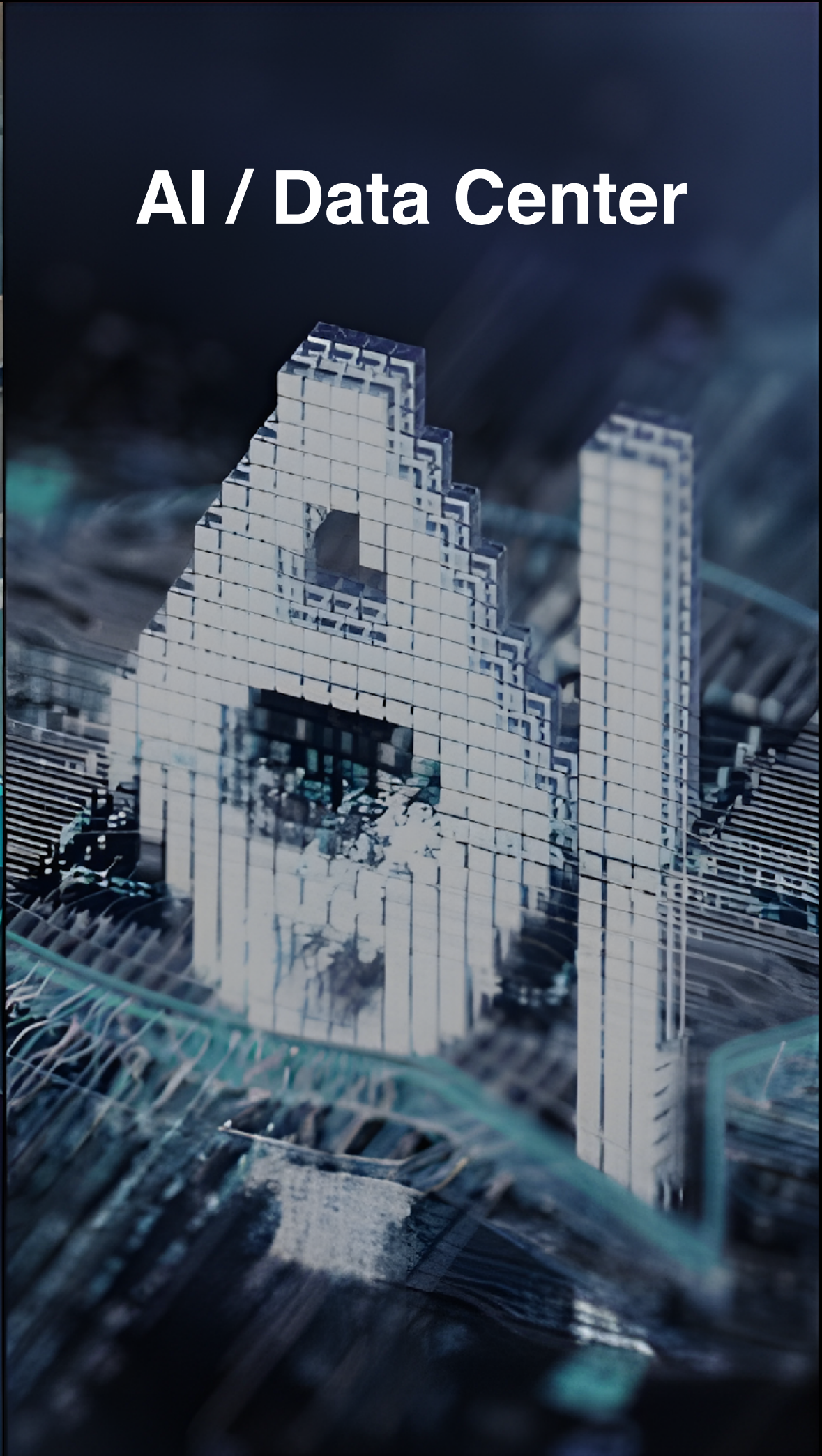


## Automotive Components

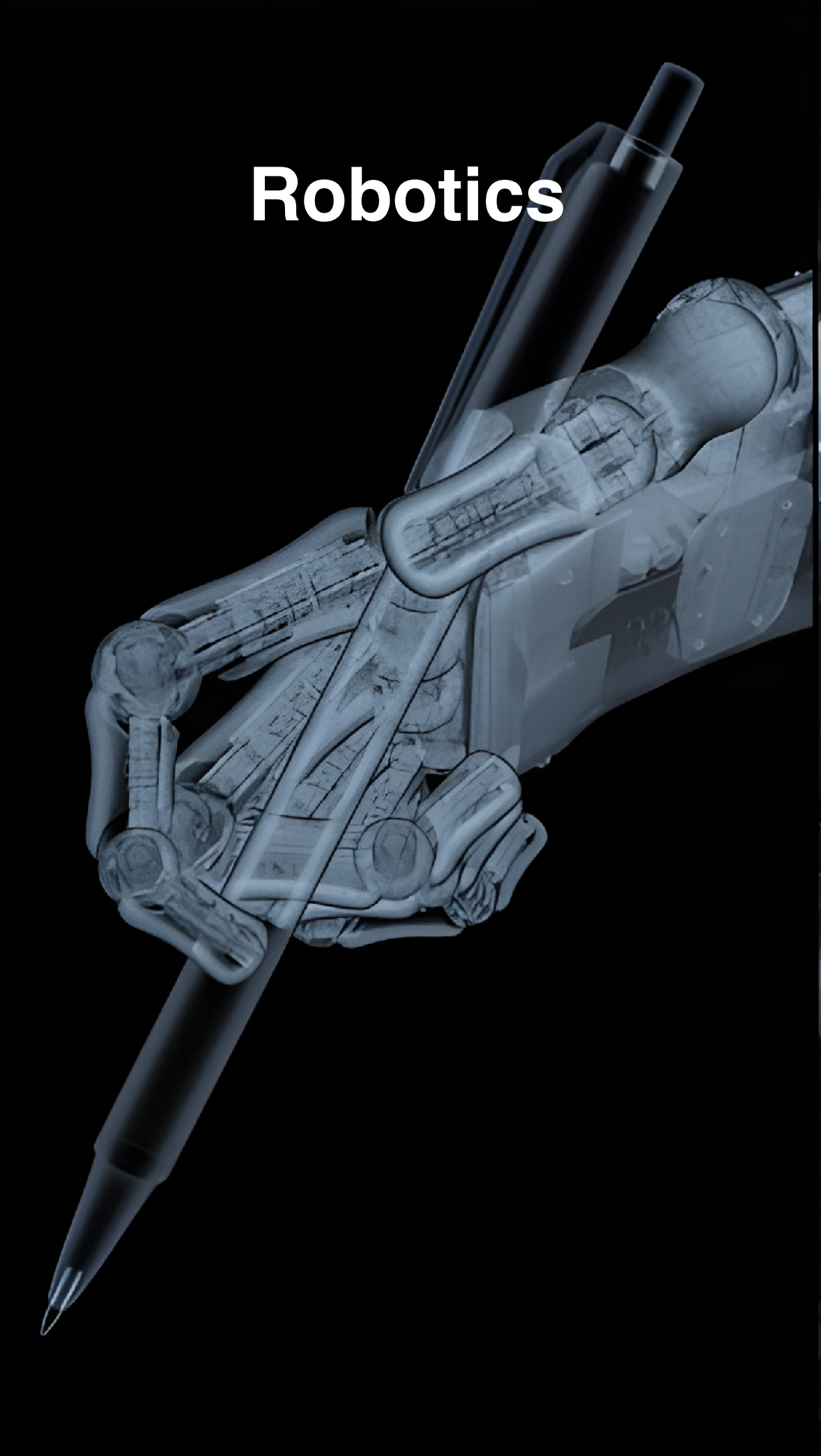




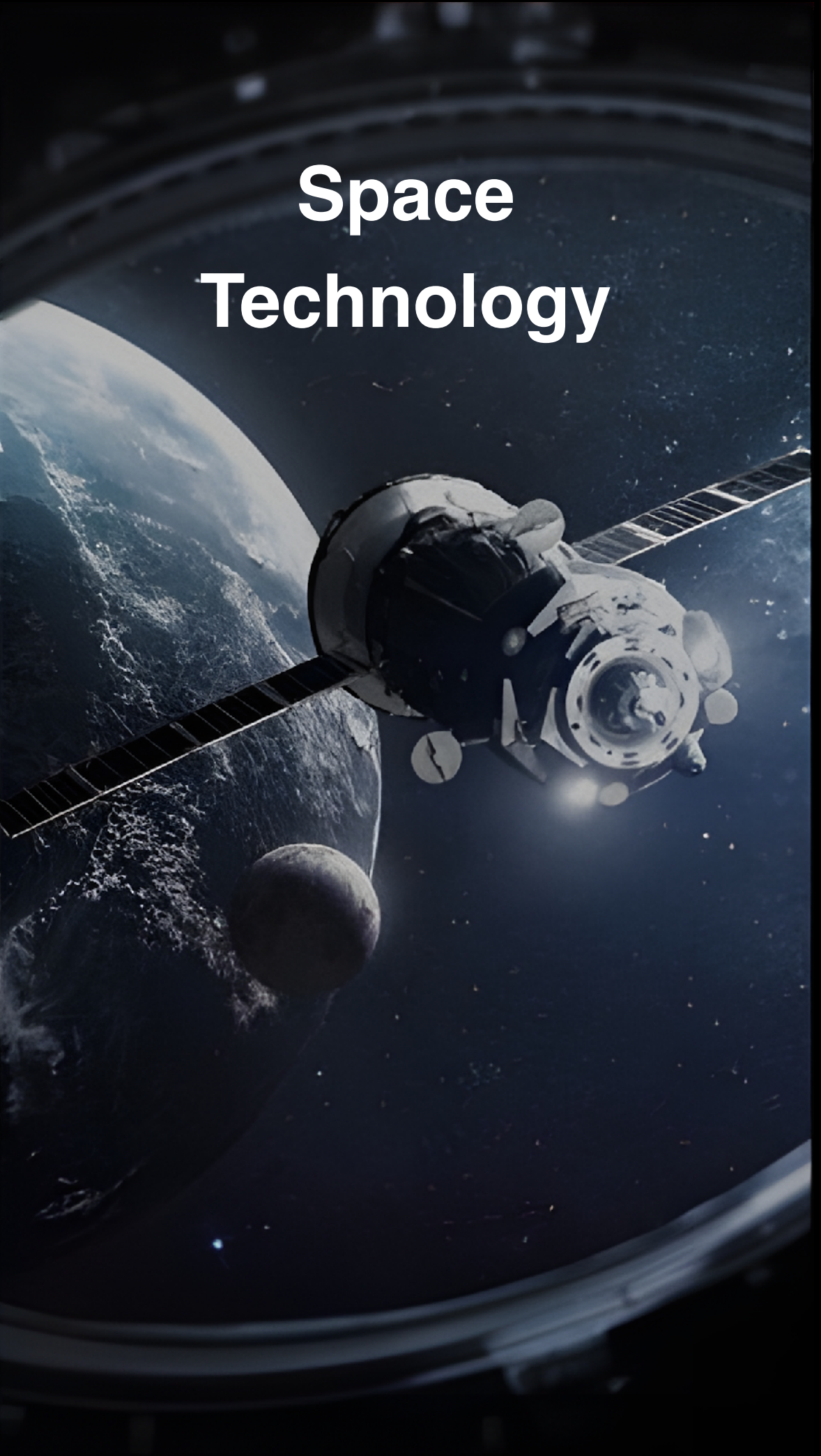
**Future Mobility**



**AI / Data Center**



**Robotics**



**Space Technology**



# S-CURVE

## TECHNOLOGY EVOLVES

➤ The Shift in Tech Leadership During the Industrial Revolution

**1st**

Steam Engine  
Mechanization

**2nd**

Electrification  
Industrialization

**3rd**

PC / Internet / Mobile phone  
Platform / Cloud Computing  
Autonomous Driving

**4th**

AI  
Robotics  
Space Industry

MEASURE OF ADVANCEMENT

EXISTING  
TECHNOLOGY

 NEW  
TECHNOLOGY  
THE BREAKTHROUGH !

MEASURE OF APPLIED EFFORT



# ENABLE THE NEXT

We aim to be the reliable technology partner for paradigm-shifting companies, enabling our customers' aspiration to drive future transformation in electronics, mobility, and robotics



**LG Innotek**



**TECHNOLOGY  
DRIVEN**

**DYNAMIC  
CONNECTION**

**RELIABLE  
PERFORMANCE**

Perception  
for Everything™



**LG Innotek**



**AEVA**





# SCALING MANUFACTURING

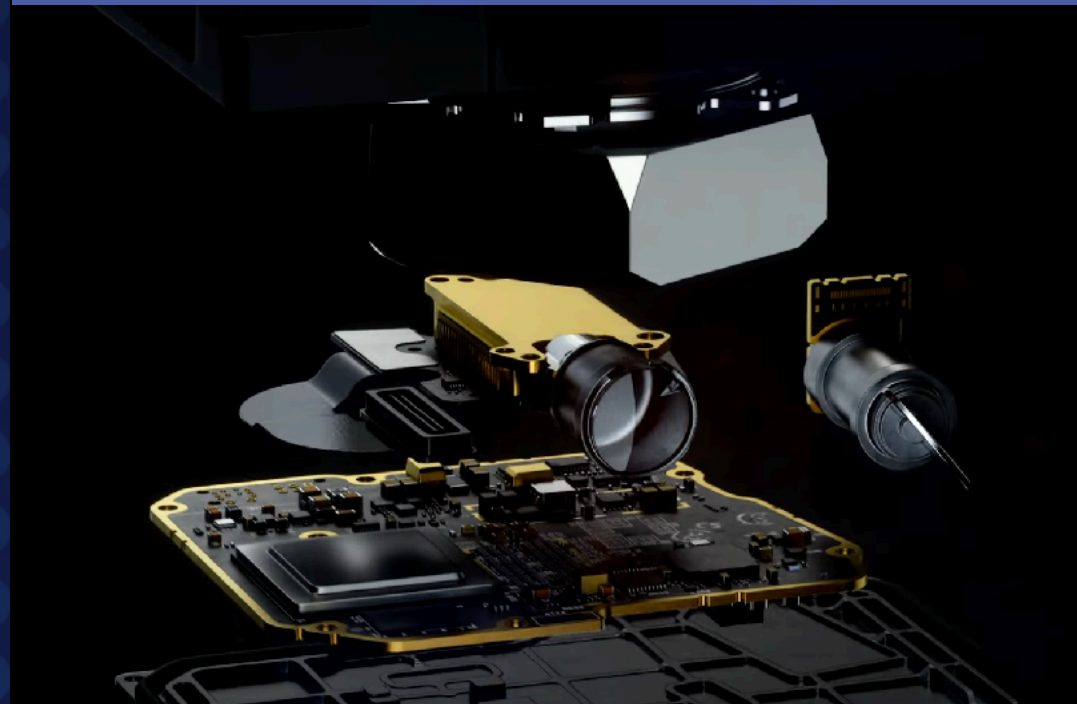
# Manufacturing Scale for Ramp Up

**Simplified LiDAR  
on Chip Designed  
for Scale**



Reduced components,  
improved reliability and  
design for scale

**Purpose Built for  
Automated Assembly  
and Test**



Enabling world's first cost  
effective FMCW mass  
production line

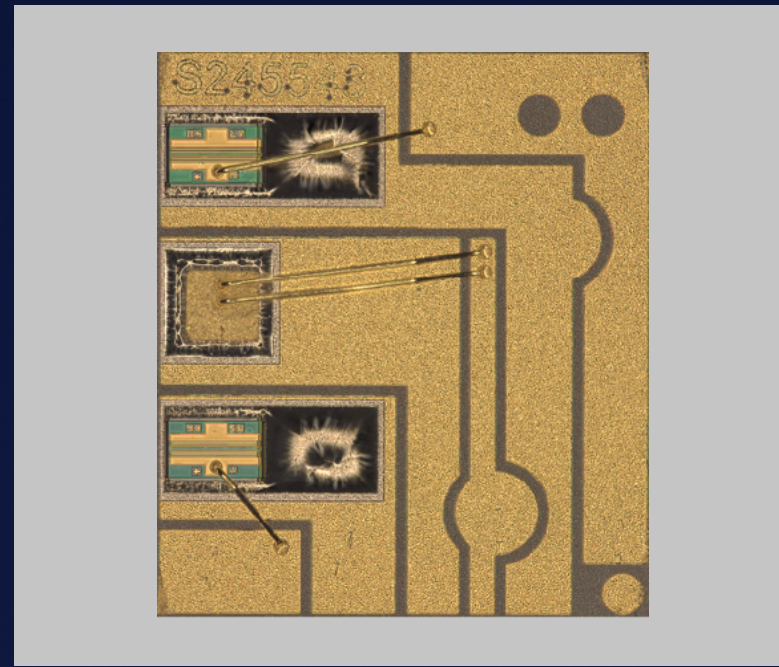
**World Class Partners  
with Global Footprint**



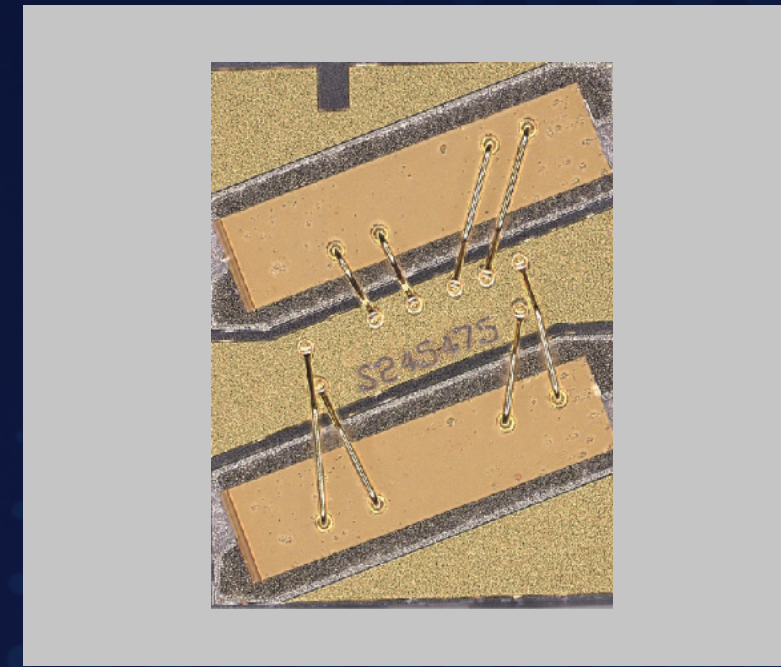
Committed long term  
partners with large scale  
and global production

# LiDAR On Chip Designed for Mass Scale

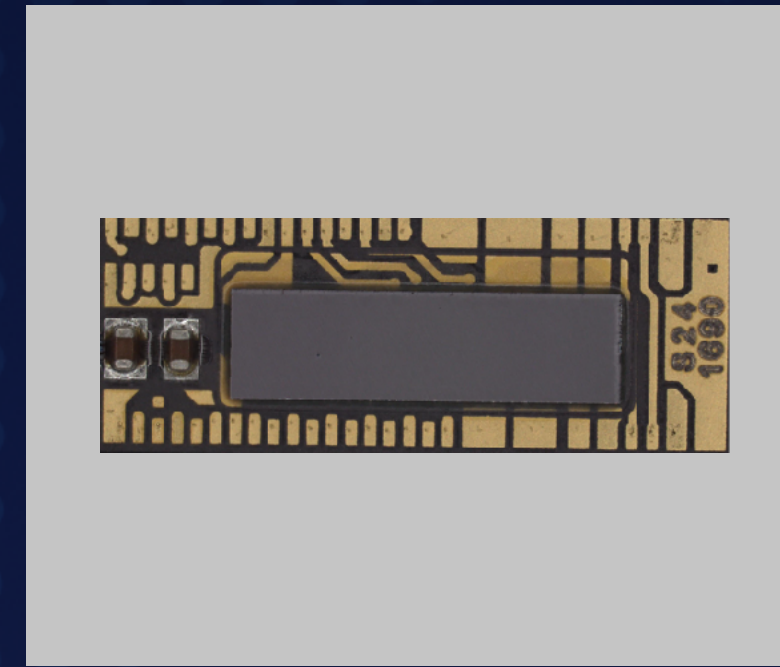
Aeva Custom Silicon Photonic Chipset



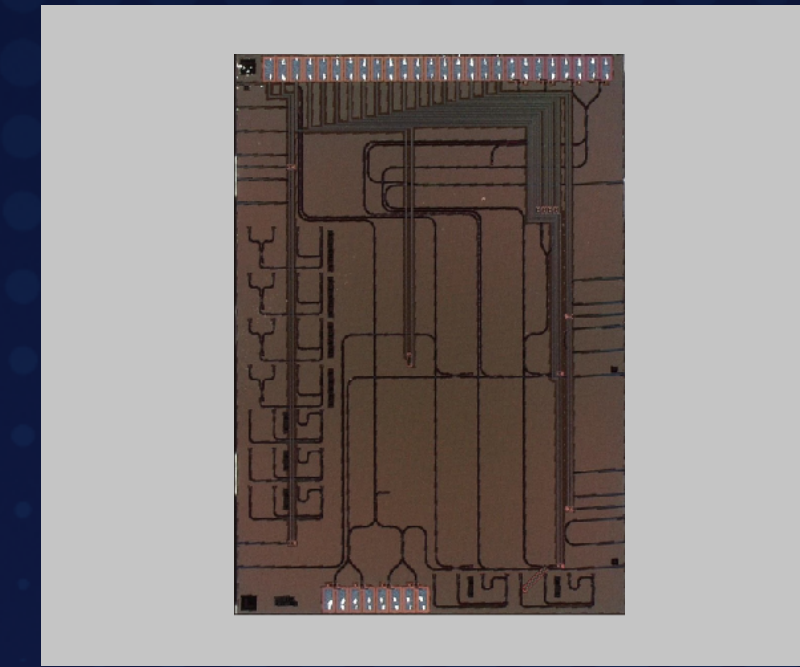
Laser



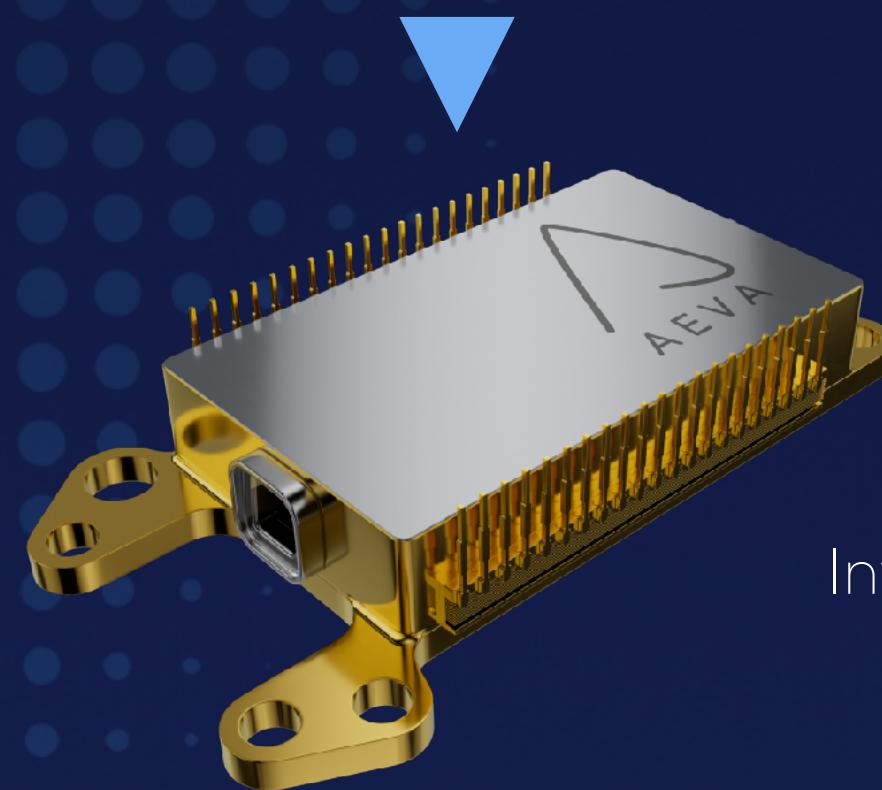
Semiconductor Optical Amplifier (SOA)



Laser Driver ASIC and TIA ASIC



Silicon Photonics Integration



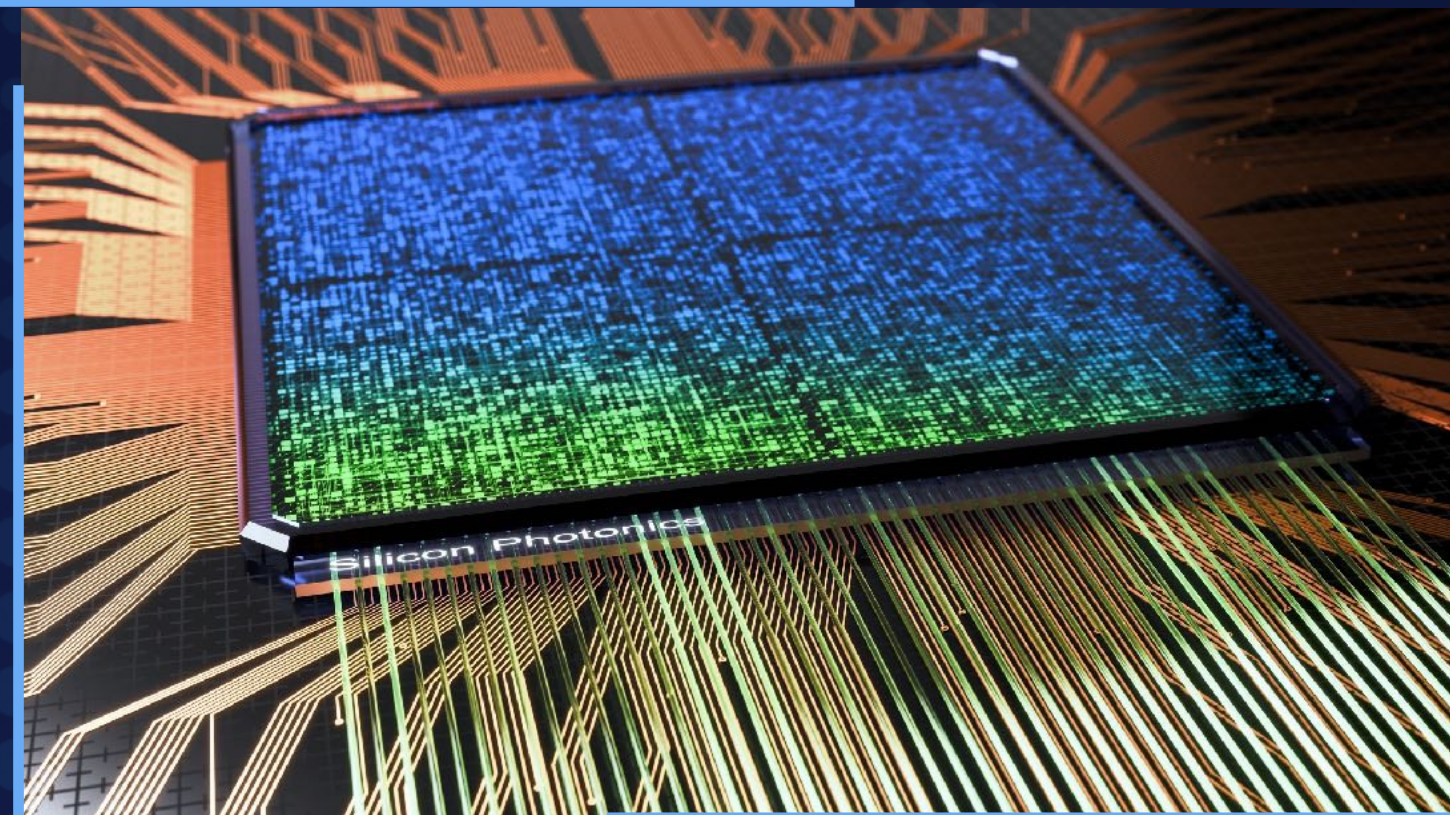
**Aeva CoreVision™**

Automotive Grade Chip Module  
Integrates All LiDAR Optical Components

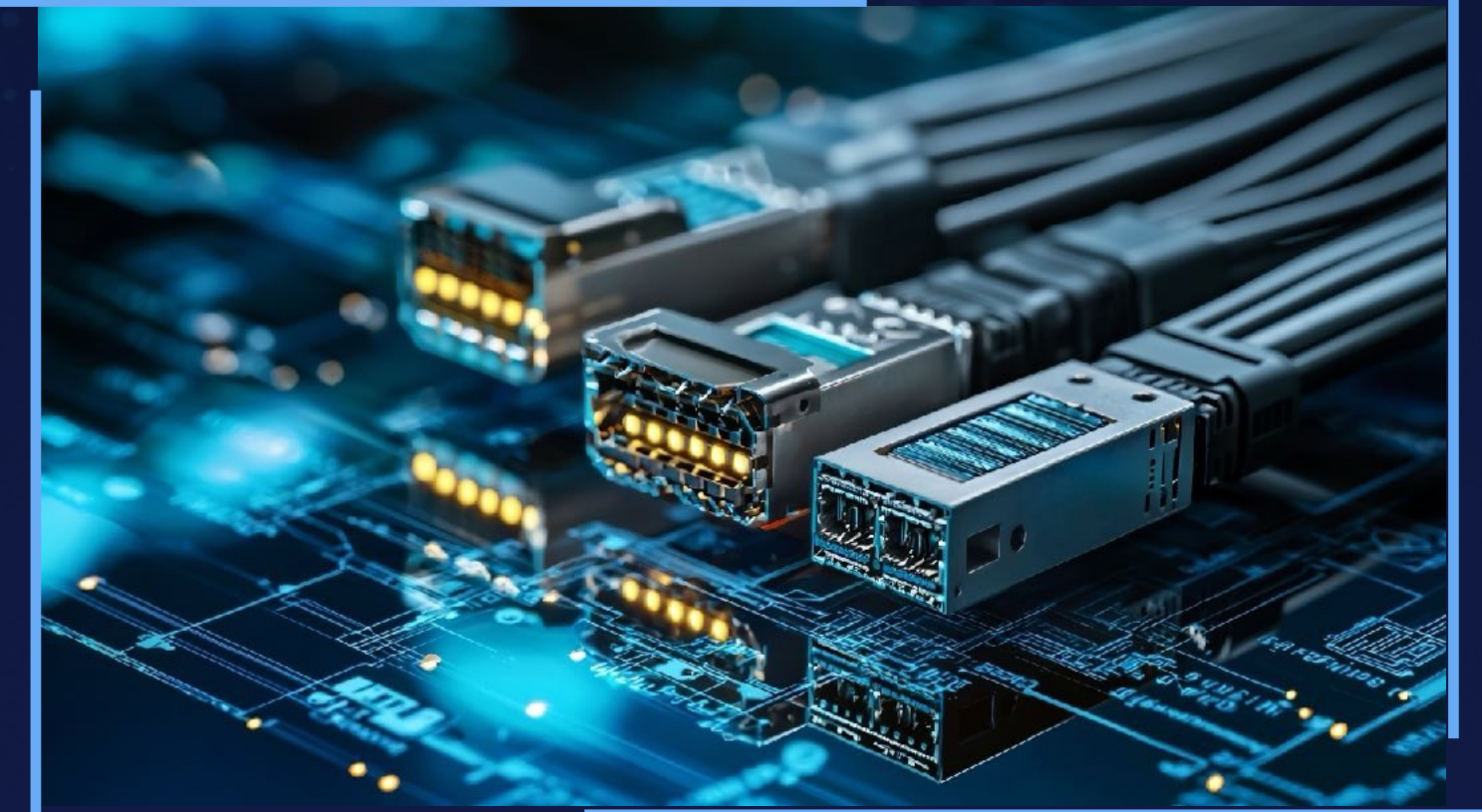
# Leverages Significant Ecosystem Investments in Silicon Photonics



AI DATA CENTERS

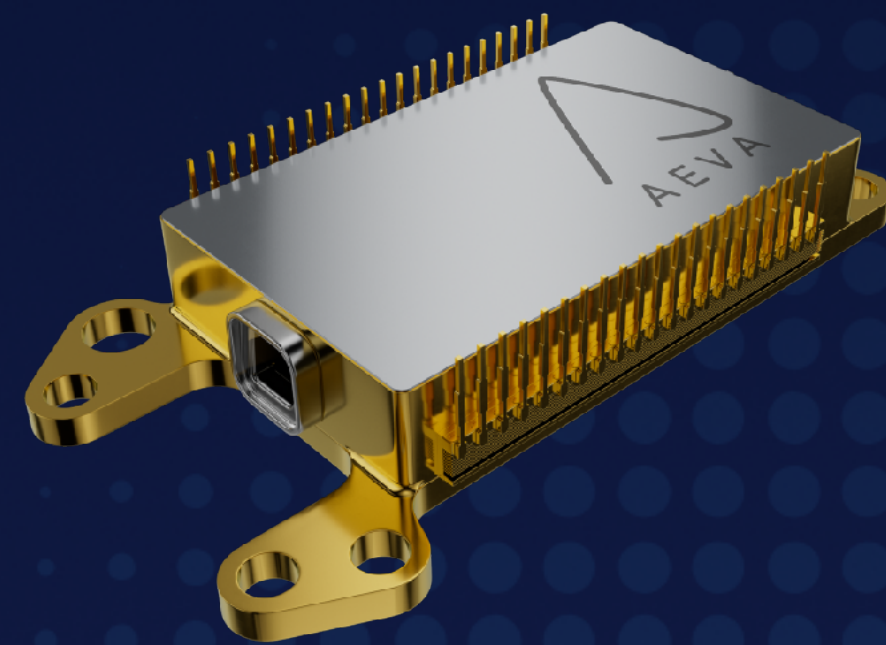


CO-PACKAGED OPTICS



TRANSCEIVERS

# One Perception Platform Enables Modular Final Assembly



Atlas



Atlas  
Ultra



Eve-1D



Eve-1V



Atlas  
Orion

# Quality is at the core of everything we do



**ISO 9001:2015**  
Quality Management



**ISO 27001:2022**  
Information Security



**TISAX Level 2**  
European Information  
Security



**ASPICE Level 1**  
Automotive  
Software

# World-class Manufacturing Partners with Global Footprint

Strategic Partner



Silicon Chip



Optical Assembly



IATF Certified Final Assembly





# FINANCIALS

# Second Quarter 2025 Summary

**\$5.5M**

Revenue

**(\$25.1)M**

Non-GAAP  
Operating Loss<sup>2</sup>

**(\$31.2)M**

Gross Cash Use  
(operating cash flow less capex)<sup>3</sup>

# \$80B Market Opportunity

## Automotive



Passenger



Trucking



Mobility

\$25B

## Manufacturing Automation



Quality Control



Automated Assembly



Vibration and Speed

\$14B

## Smart Infrastructure and Transport



Venue Security and Management



Traffic Management and Enforcement



Air and Rail Active Safety

\$8B

## Defense



Drones

\$5B

## Robotics



Humanoids

\$10B

## Consumer



Consumer Technology



Home Products

\$18B

# Path to Profitability Framework

**100%+**

Average Annual  
Revenue Growth Target

**5 to 15%**

Annual Non-GAAP  
OpEx Growth Target<sup>4</sup>

**35% to 45%**

Non-GAAP Gross  
Margin Target<sup>5</sup>

# FOOTNOTES

1. Market opportunity based on industry data and analysis and Aeva internal estimates
2. Non-GAAP operating loss in Q2 2025 excludes \$6.0M in stock-based compensation and \$3.8M loss on joint development agreement
3. Capital expenditures were \$1.4M in Q2 2025
4. Non-GAAP annual operating expense excludes stock-based compensation and non-recurring items
5. Non-GAAP gross margin excludes stock-based compensation and non-recurring items

## RECONCILIATION FROM GAAP TO NON-GAAP OPERATING LOSS (UNAUDITED)

(In thousands, except share and per share data)

	Three Months Ended June 30,		Six Months Ended June 30,	
	2025	2024	2025	2024
GAAP operating loss	(\$34,923)	(\$48,913)	(\$65,341)	(\$86,257)
Stock-based compensation	6,024	5,364	10,588	10,625
Loss on joint development agreement	3,785	—	3,785	—
Litigation settlement, net	—	11,500	—	11,500
Non-GAAP operating loss	(\$25,114)	(\$32,049)	(\$50,968)	(\$64,132)

